

**13 Paton Place Goulburn NSW**

4 🛏 3 🚿 4 🚗

\* Perched in a commanding position to capture breathtaking views, this impressive two-storey brick residence combines timeless quality and generous proportions with the added privacy of the neighbouring reserve and quiet cul-de-sac location.

\* Built to a high standard and thoughtfully designed for both family life and entertaining, multiple living and dining areas provide flexibility for both relaxed family time and formal gatherings. Two covered outdoor entertaining spaces flow seamlessly off the living areas, making the most of morning sun and the neat landscaped backyard.

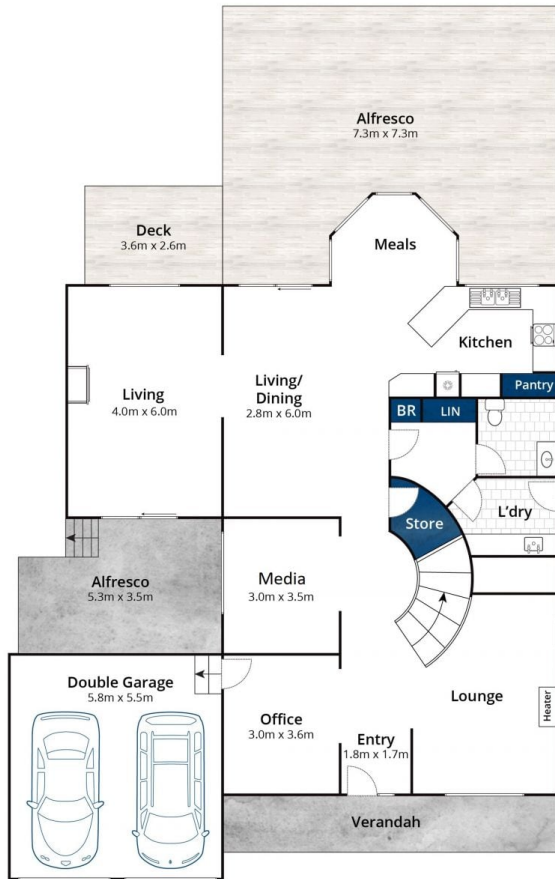
\* At the heart of the home, overlooking the open plan living and dining, the beautifully appointed timber kitchen features elegant stone benchtops, ample storage, and quality appliances, making it as practical as it is stylish.

**Type** : House  
**Price** : \$949 000  
**Land Size** : 832.3 sqm  
**View** : <https://www.goulburnrealestate.com.au/sale/nsw/southern-tablelands/goulburn/residential/house/8677015>

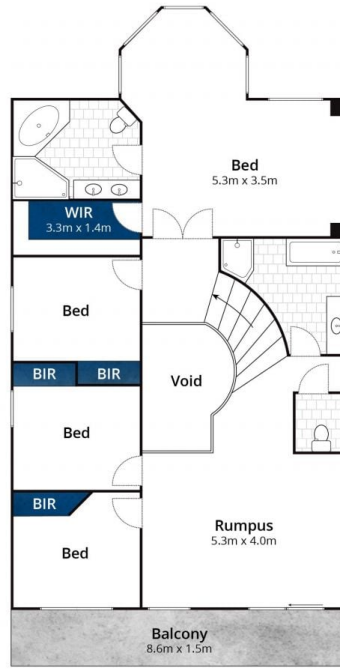


**Barry McEntee**  
02 4822 8711

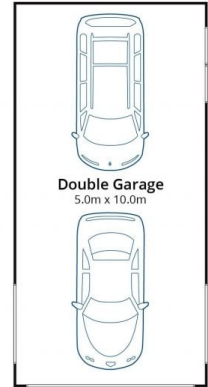
[For full version visit the website](#)



Ground Floor



First Floor



(Not In Position)

Whilst [bwrn.com.au](http://bwrn.com.au) has made every attempt to ensure the accuracy of the floor plan contained here, measurements are approximate and no responsibility is taken for any error, omission, or mis-statement. This plan is for illustrative purposes only.

# 13 Paton Place, Goulburn