



5 Paton Place Goulburn NSW

4 2 2

* Superbly located in a quiet cul-de-sac this immaculate home has tremendous views from it's private, elevated position.

* Whilst the property sits high on the hill, the home itself rests on level ground and has been meticulously landscaped to provide a low maintenance lifestyle. There is a nature reserve at the rear of the property which adds to the tranquil environment.

* Offering 4 bedrooms and 2 bathrooms, including an ensuite and walk-in robe in the master suite, the attractive residence offers modern, open plan living at its best.

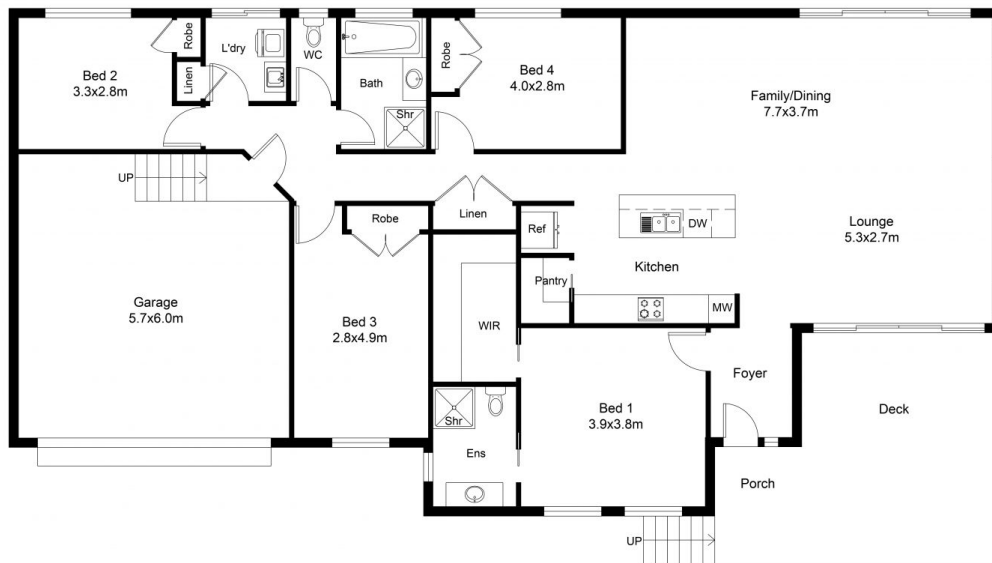
* The chef's kitchen which features Smeg appliances including a stove, oven and dishwasher, is very well appointed with a large island bench which really is the hub of the home, providing an ideal gathering place for the

Type : House
Price : \$899 000
Land Size : 879.7 sqm
View : <https://www.goulburnrealestate.com.au/sale/nsw/southern-tablelands/goulburn/residential/house/8663861>



Barry McEntee
02 4822 8711

[For full version visit the website](https://www.goulburnrealestate.com.au)



FLOOR PLAN

This floor plan including furniture, fixture measurements and dimensions are approximate and for illustrative purposes only.
BoxBrownie.com gives no guarantee, warranty or representation as to the accuracy and layout.
All enquiries must be directed to the agent, vendor or party representing this floor plan.