



firstnational
REAL ESTATE
Goulburn



firstnational
Goulburn



firstnational
Goulburn



firstnational
Goulburn

88 Gorman Road Goulburn NSW

5 🚗 3 🚚 10 🚗

This architecturally designed solar passive home is not just a place to live, but a sanctuary that reflects an eco-conscious lifestyle intertwined with innovation and practicality.

Perfectly located, private yet moments from the heart of the Goulburn CBD, this superb 25 acres / 10 hectares block sets it apart from the rest and enjoys stunning views to the north-east from an elevated position. The land has potential to be subdivided - subject to Council approval.

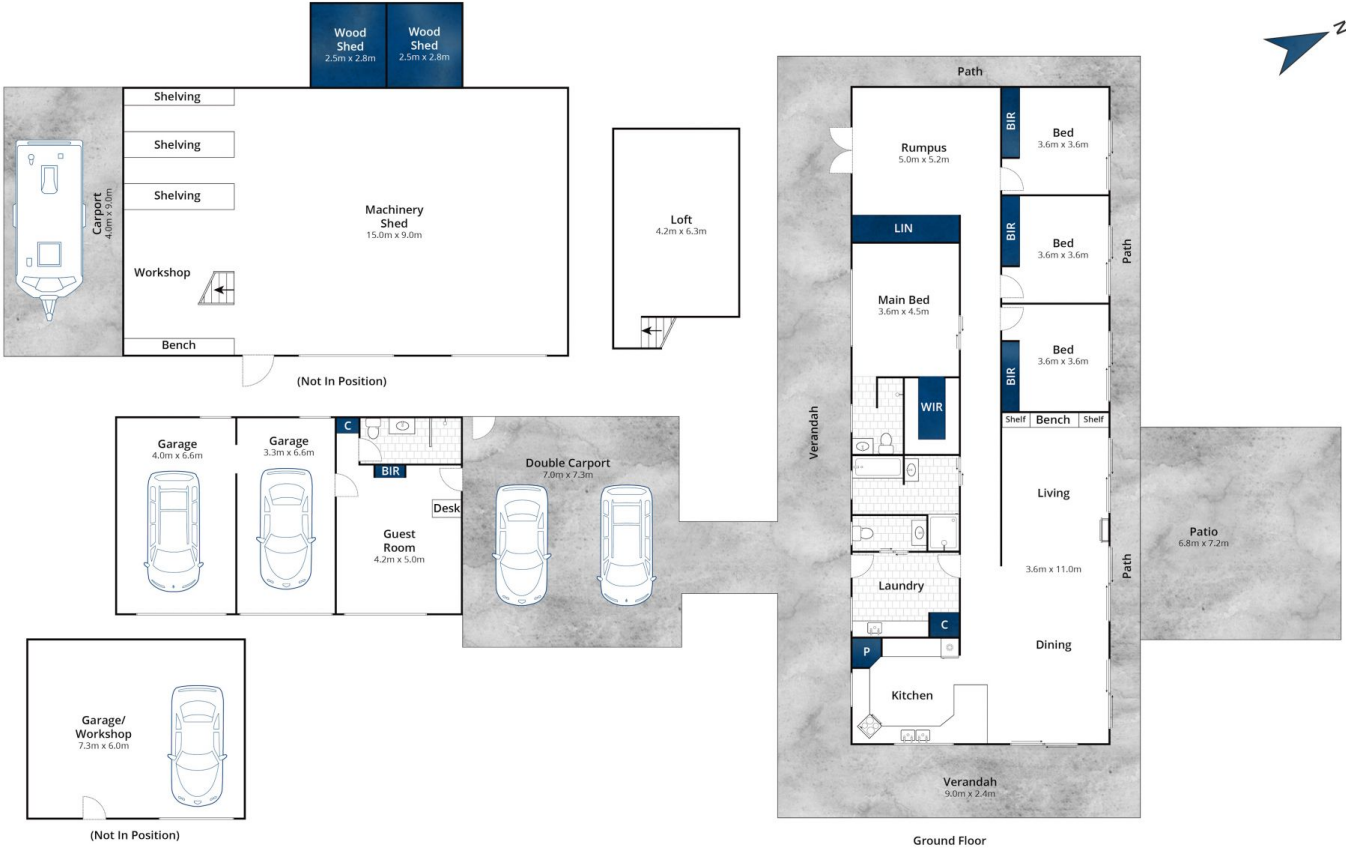
The house is strategically positioned on the block, tucked below the crest of the hill. There are remarkable views offering panoramic sunsets over the city and surrounding district from the highest point which also overlooks the

Type : House
Price : \$ 1,850,000
Land Size : 25 Acres
View : <https://www.goulburnrealestate.com.au/sale/nsw/southern-tablelands/goulburn/residential/house/8637953>



Barry McEntee
02 4822 8711

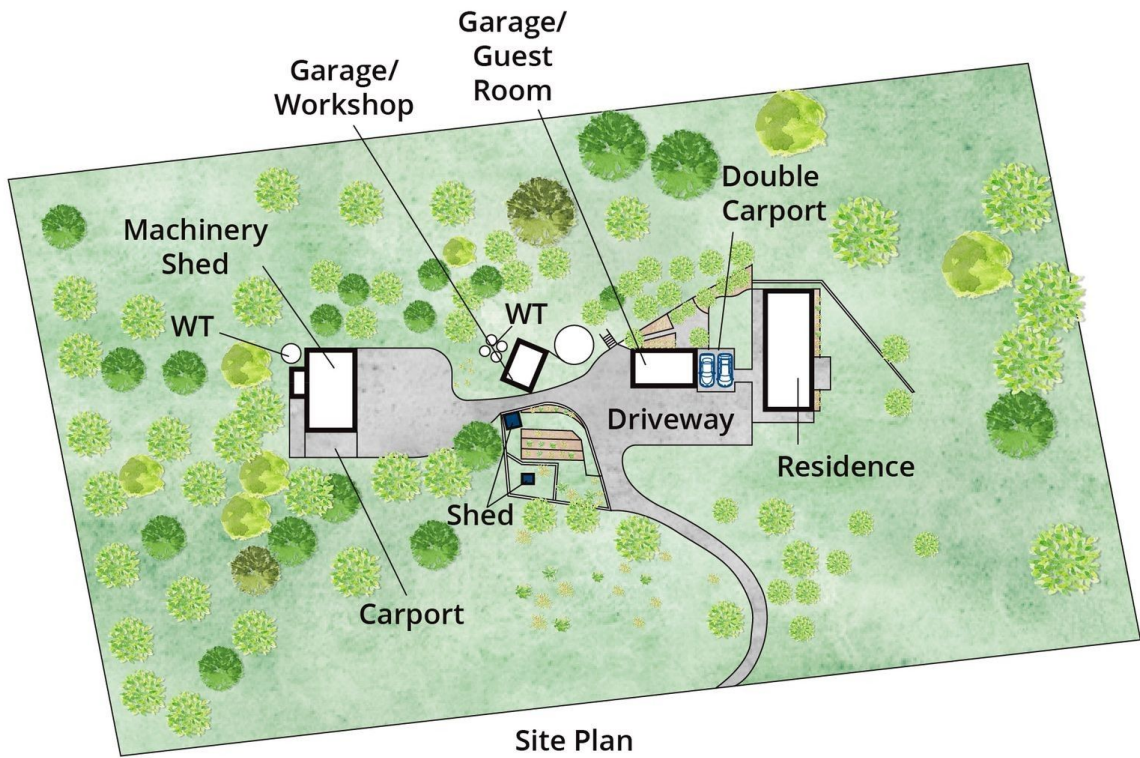
[For full version visit the website](https://www.goulburnrealestate.com.au)



Approx House Area 194m²

Whilst bwrn.com.au has made every attempt to ensure the accuracy of the floor plan contained here, measurements are approximate and no responsibility is taken for any error, omission, or mis-statement. This plan is for illustrative purposes only.

88 Gorman Road, Goulburn



Whilst bwrn.com.au has made every attempt to ensure the accuracy of the floor plan contained here, measurements are approximate and no responsibility is taken for any error, omission, or mis-statement. This plan is for illustrative purposes only.

88 Gorman Road, Goulburn