



6 Little Close Goulburn NSW

4 2 2

* Set on an impressive 2000m2 of land in a quiet cul de sac, this expansive family residence delivers space, privacy and practicality in equal measures.

* Thoughtfully designed with growing families in mind, the home offers generous proportions throughout. No less than 3 large living spaces provide flexibility for day to day living and effortless entertaining. With a north aspect, the large windows let in plenty of natural light. Coupled with ducted reverse cycle air conditioning throughout, it makes for a comfortable home year round.

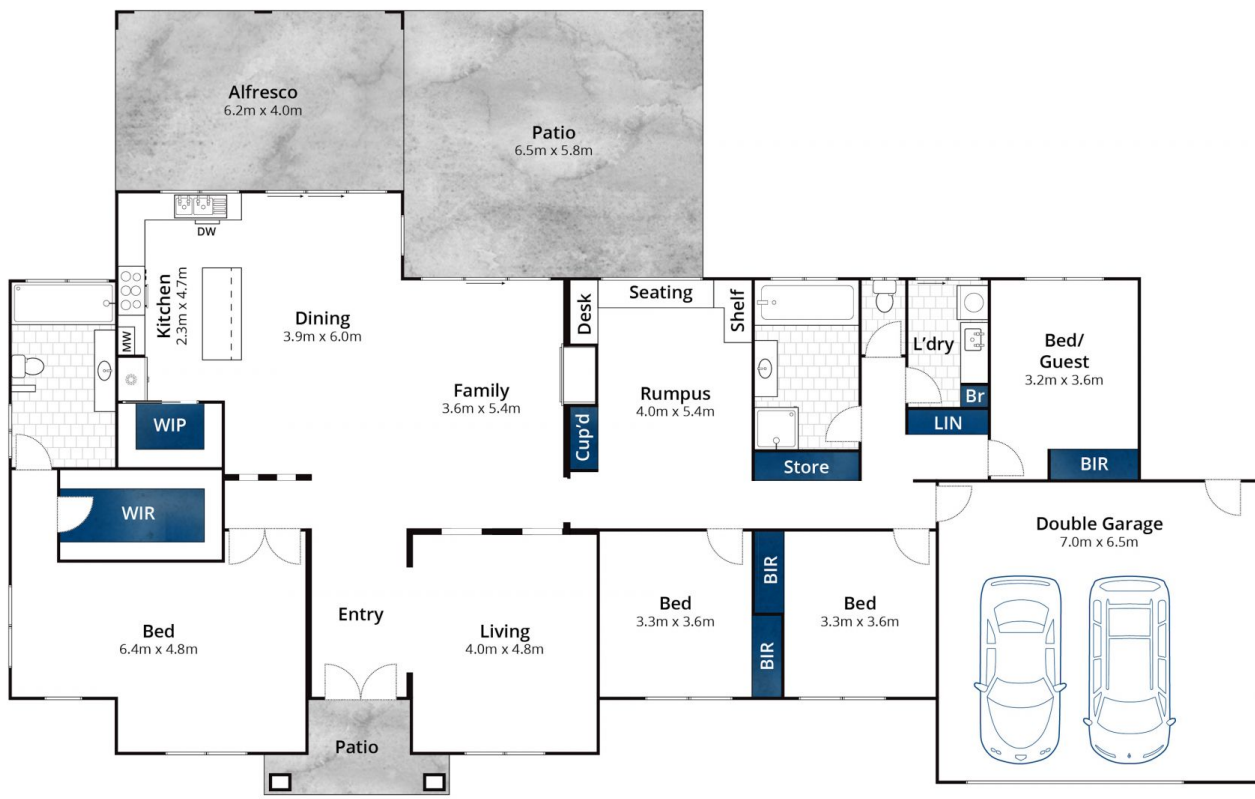
* The well appointed kitchen has an abundance of storage complemented by a 900mm oven and cooktop as well as a large walk in pantry. It is the hub of the home and seamlessly connects the open plan living areas and the expansive outdoor areas - perfect for weekend barbeques,

Type : House
Price : \$1 225 000
Land Size : 2008 sqm
View : <https://www.goulburnrealestate.com.au/sale/nsw/southern-tablelands/goulburn/residential/house/8635974>



Brody Willis
02 4822 8711

[For full version visit the website](https://www.goulburnrealestate.com.au)



Approx House Area 269m²

Whilst bwrn.com.au has made every attempt to ensure the accuracy of the floor plan contained here, measurements are approximate and no responsibility is taken for any error, omission, or mis-statement. This plan is for illustrative purposes only.

6 Little Close, Goulburn