



12 Nicole Place Goulburn NSW

6 3 5

* Set in a very tightly held and family friendly precinct of Goulburn is this expansive residence on over 7000m2. Available for the first time, it delivers exceptional space, flexibility and comfort for the large or growing families. Thoughtfully designed with multiple living zones and a versatile floorplan, the home easily accommodates multi-generational living.

* At the heart of the home is the updated and well-appointed kitchen with a walk in pantry. The large island bench creates a fantastic hub for guests, family and friends. Complete with stainless steel appliances, it offers an abundance of storage and workspace and flows seamlessly to the covered outdoor entertaining area complete with built in BBQ.

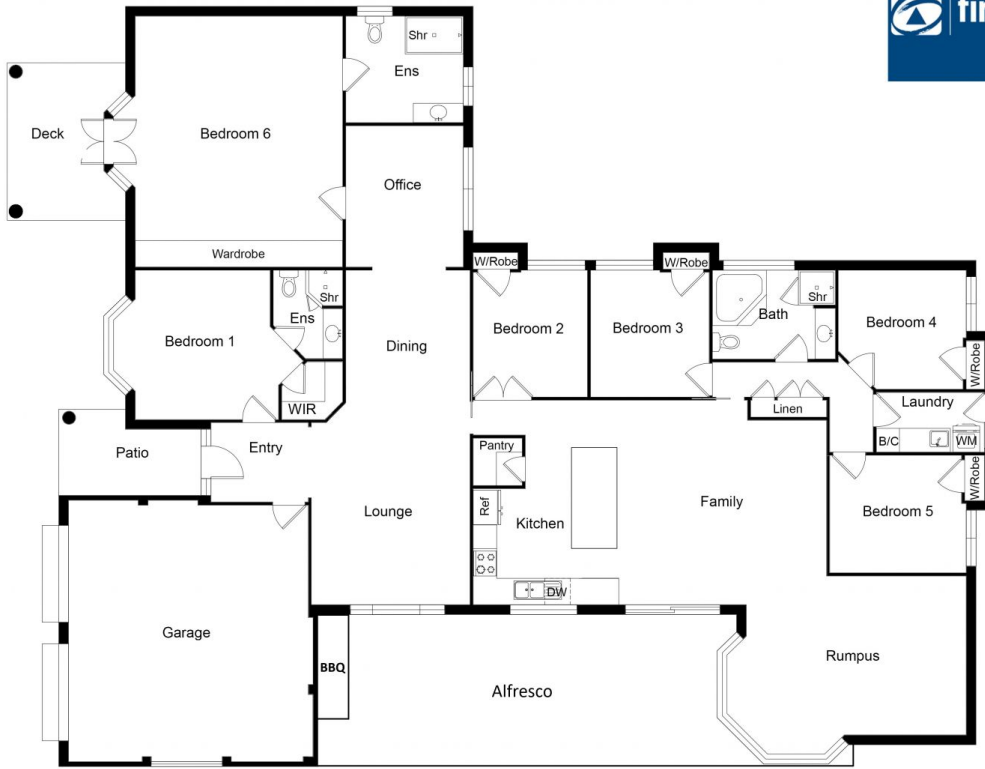
* With 6 bedrooms in total, the private master suite features

Type : House
Land Size : 7163 sqm
View : <https://www.goulburnrealestate.com.au/sale/nsw/southern-tablelands/goulburn/residential/house/8579418>



Brody Willis
02 4822 8711

[For full version visit the website](https://www.goulburnrealestate.com.au)



FLOOR PLAN

This floor plan including furniture, fixture measurements and dimensions are approximate and for illustrative purposes only.
BoxBrownie.com gives no guarantee, warranty or representation as to the accuracy and layout.
All enquiries must be directed to the agent, vendor or party representing this floor plan.