




20 Wright Place Goulburn NSW

5  2  2 

- * Perfectly positioned in a quiet cul-de-sac this spacious family home offers up to 5 bedrooms
- * The kitchen has been recently upgraded, gas cooktop and stainless steel dishwasher
- * Main bedroom with large built in robes and ensuite
- * Multiple living areas throughout the home with plenty of space for the whole family
- * Ducted heating with zones to keep the home warm throughout the winter months
- * Double lock up garage with remote roller door and internal access to the home

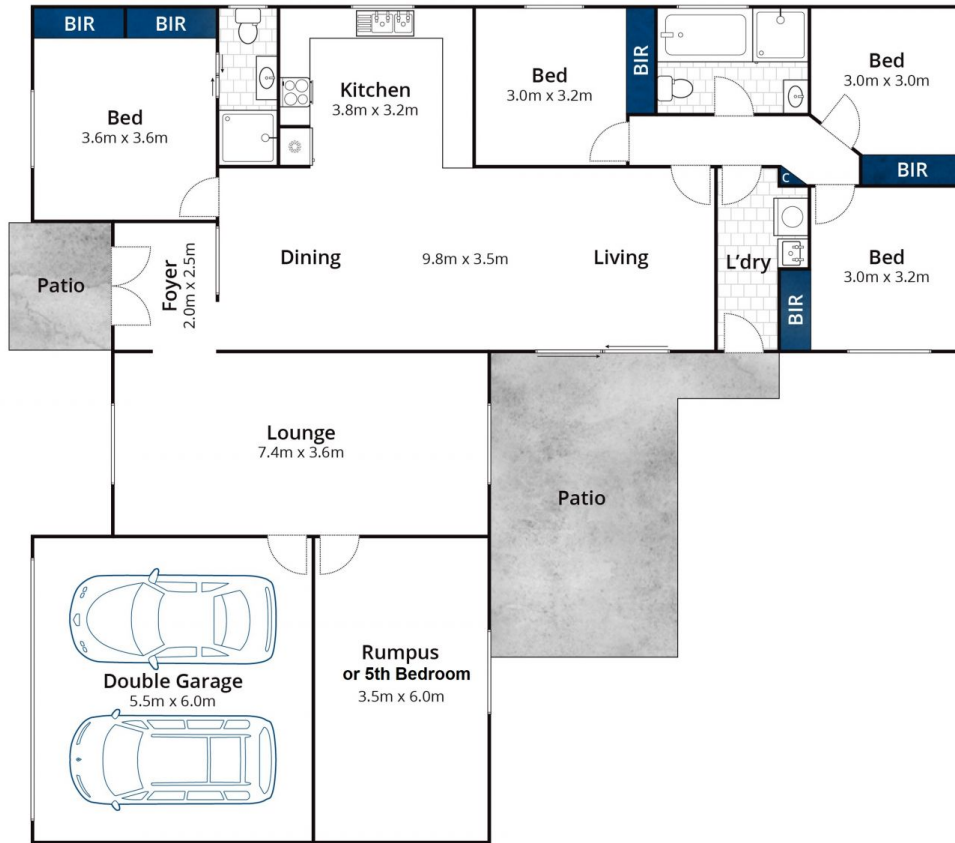
**Registration for open homes is ESSENTIAL. If you do not register you will not be informed of any changes, cancellations or updates to open times. We do not accept

Type : House
Land Size : 660 sqm
View : <https://www.goulburnrealestate.com.au/8492691>



Courtney Fitzgerald
02 4822 8711

[For full version visit the website](https://www.goulburnrealestate.com.au)



Whilst bwrn.com.au has made every attempt to ensure the accuracy of the floor plan contained here, measurements are approximate and no responsibility is taken for any error, omission, or mis-statement. This plan is for illustrative purposes only.

20 Wright Place, Goulburn