



**15 William Street Goulburn NSW**

3 1 3

\* Backing directly onto the scenic Wollondilly River and walking track, this property offers a picturesque setting, while situated only a short drive to the CBD.

\* Recently updated kitchen and brand-new bathroom mean all the hard work has been done so you can simply move in and enjoy.

\* Two separate living areas provide flexibility, with a gas heater in the front lounge and a split system plus wood fire with heat transfer system in the rear living space for year-round comfort.

\* All three bedrooms feature built-in wardrobes for practical storage.

\* The convenient internal laundry includes a separate powder room for added functionality.

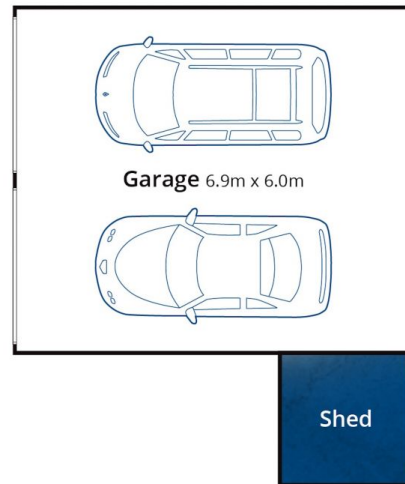
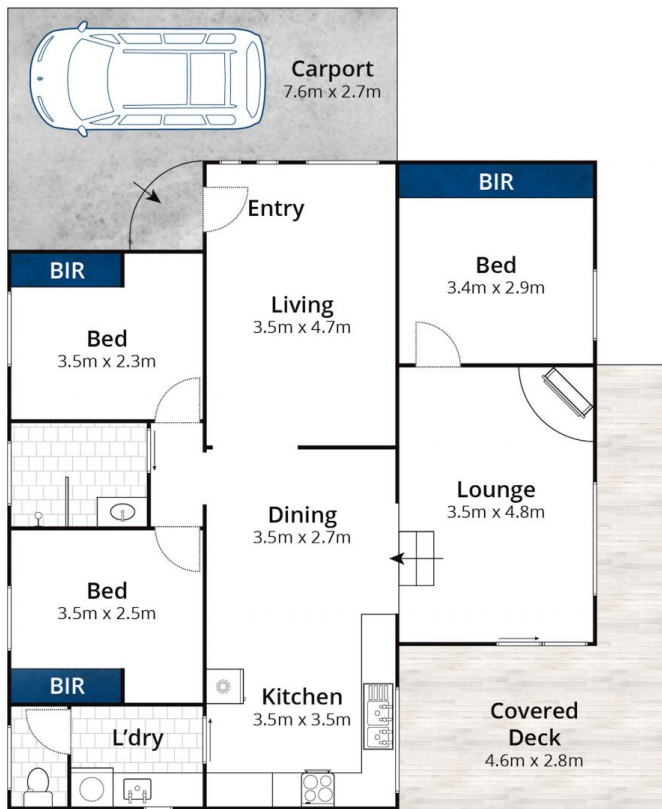
\* Outdoor living is easy with a covered alfresco,

**Type** : House  
**Price** : \$ 660,000  
**Land Size** : 993.8 sqm  
**View** : <https://www.goulburnrealestate.com.au/sale/nsw/southern-tablelands/goulburn/residential/house/8473266>



**Barry McEntee**  
02 4822 8711

[For full version visit the website](https://www.goulburnrealestate.com.au)



(Not Actual Position)

Whilst [bwrn.com.au](http://bwrn.com.au) has made every attempt to ensure the accuracy of the floor plan contained here, measurements are approximate and no responsibility is taken for any error, omission, or mis-statement. This plan is for illustrative purposes only.

## 15 William Street, Goulburn