

6 Fox Close Goulburn NSW

4 2 2

* Modern family home featuring a contemporary design - located in a quiet cul-de-sac just a stone's throw to K & G's café, the new supermarket precinct and close to the Wollondilly Walking Track

* The flexible floorplan takes full advantage of the sunny north aspect with cathedral ceilings and spacious living areas

* Modern living at its best with an open plan kitchen, dining and family room which steps straight out to a massive alfresco entertaining area

* There are 4 really good sized bedrooms, the main with ensuite and walk-in robe plus fully ducted gas heating and a double garage with internal access to the home

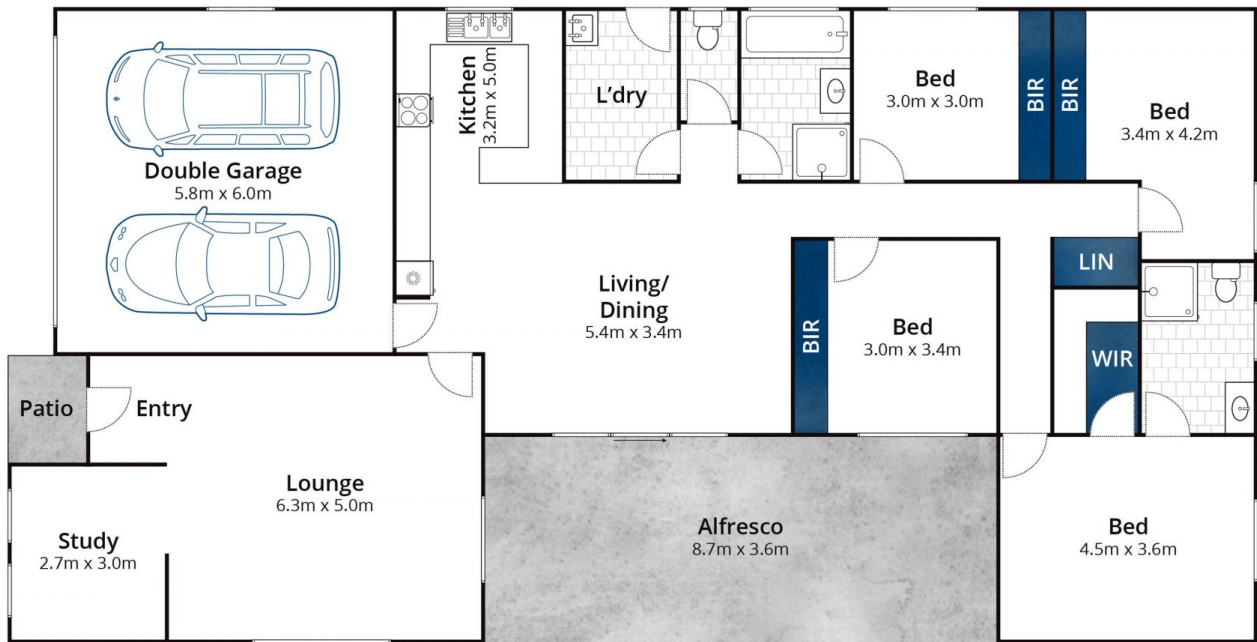
* Large private back yard with side access - plenty of room to build a shed. A well-built, spacious home in a highly

Type : House
Price : \$ 832,000
Land Size : 720 sqm
View : <https://www.goulburnrealestate.com.au/sale/nsw/southern-tablelands/goulburn/residential/house/8413840>



Barry McEntee
02 4822 8711

[For full version visit the website](https://www.goulburnrealestate.com.au)



Whilst bwrn.com.au has made every attempt to ensure the accuracy of the floor plan contained here, measurements are approximate and no responsibility is taken for any error, omission, or mis-statement. This plan is for illustrative purposes only.

6 Fox Close, Goulburn