



14 Redman Circuit Goulburn NSW

4 2 2

* Positioned on the high side of the street in Belmore Estate's most sought after and family friendly pocket, this solid well-maintained home offers the perfect balance of comfort, style & convenience including side access for anybody looking to store a caravan or boat.

* Modern living at its best with the kitchen overlooking an open plan dining and family room which takes full advantage of the north aspect - where you can relax and soak up the sun.

* Step straight from the family room to the impressive outdoor entertaining area - completely undercover with fully appointed outdoor kitchen including sink, hot & cold water, BBQ, and oven.

* The main bedroom enjoys the benefit of an ensuite, and walk-in wardrobe. The second living room will be the family

Type : House
Price : \$ 869,000
Land Size : 705 sqm
View : <https://www.goulburnrealestate.com.au/sale/nsw/southern-tablelands/goulburn/residential/house/8363407>

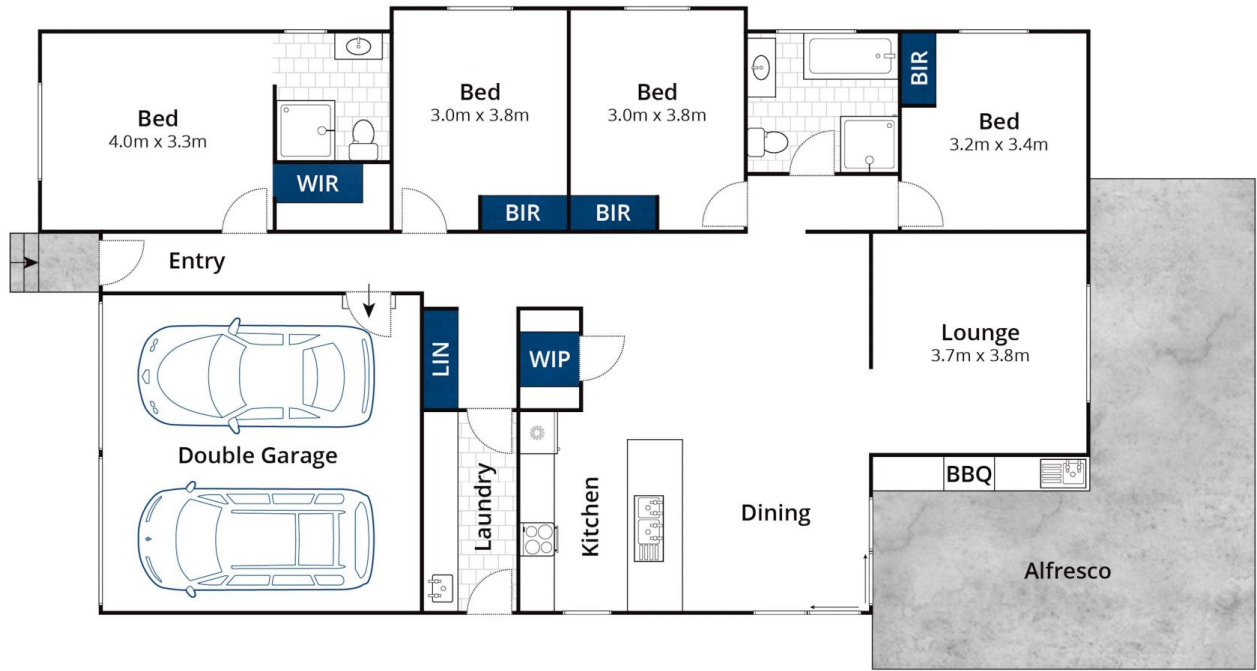


Barry McEntee
02 4822 8711



Brody Willis
02 4822 8711

[For full version visit the website](https://www.goulburnrealestate.com.au)



Whilst bwrn.com.au has made every attempt to ensure the accuracy of the floor plan contained here, measurements are approximate and no responsibility is taken for any error, omission, or mis-statement. This plan is for illustrative purposes only.

14 Redman Circuit, Goulburn