



6 Bigwood Place Goulburn NSW

3 2 1

* Situated in the popular Mistful Park estate, this home is just moments from cafés, childcare centres, the new supermarket development, and the Wollondilly River walking track.

* Set in a private battle-axe position, the property offers peace and seclusion while remaining close to local amenities.

* The modern kitchen and dining area flow seamlessly into two generous living spaces, offering plenty of room for both family life and entertaining.

* High ceilings throughout the home as well as a fantastic north aspect create a spacious and light-filled atmosphere.

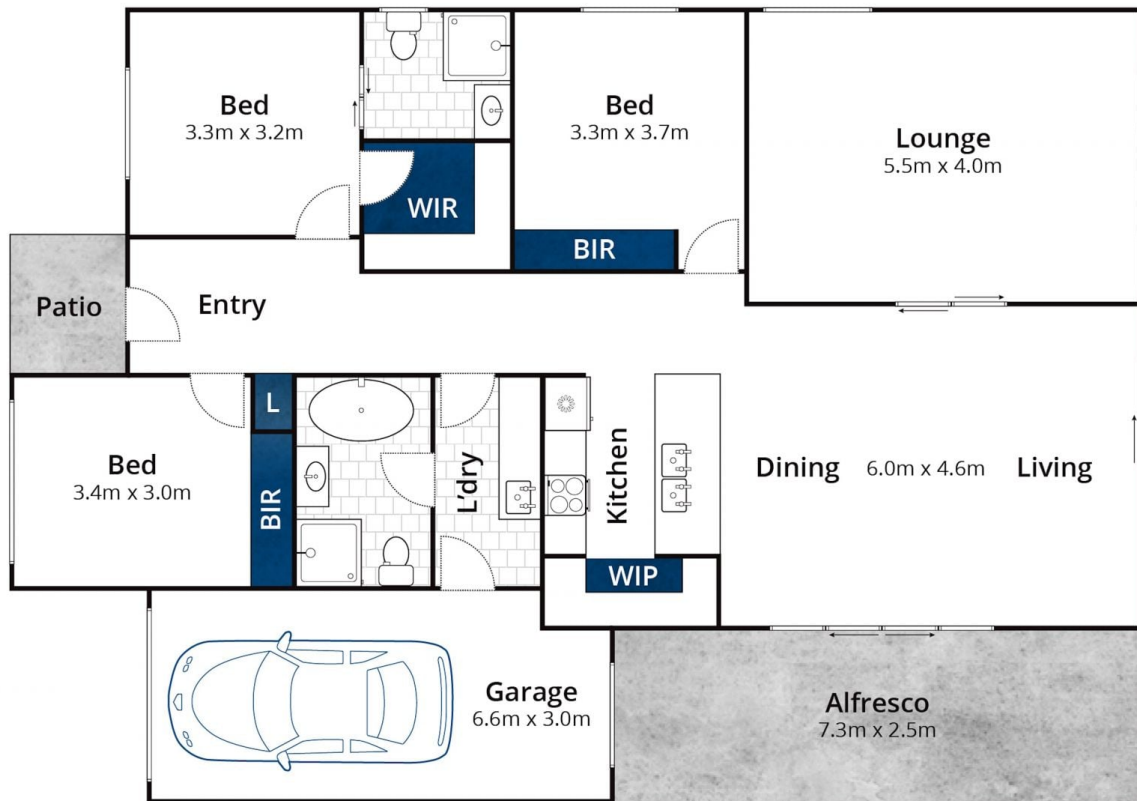
* The master suite includes a walk-in robe and ensuite, complemented by two additional bedrooms with built-in wardrobes.

Type : House
Price : \$ 720,000
Land Size : 350 sqm
View : <https://www.goulburnrealestate.com.au/sale/nsw/southern-tablelands/goulburn/residential/house/8353775>



Barry McEntee
02 4822 8711

[For full version visit the website](https://www.goulburnrealestate.com.au)



Whilst bwrn.com.au has made every attempt to ensure the accuracy of the floor plan contained here, measurements are approximate and no responsibility is taken for any error, omission, or mis-statement. This plan is for illustrative purposes only.

6 Bigwood Place, Goulburn