



8 Darcy Crescent Goulburn NSW

2 1 1

- * Neat and tidy 2 bedroom property on a 738m2 block of land
- * Preliminary costings completed for a granny flat to value add as well as possible dual income potential. (STCA)
- * Updated bathroom and reverse cycle air conditioning. Single carport in the backyard.
- * Located just minutes from the Canberra exit as well as the CBD.
- * A genuine opportunity to get into the market or add to the investment portfolio.

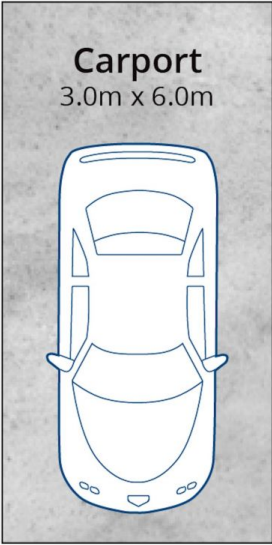
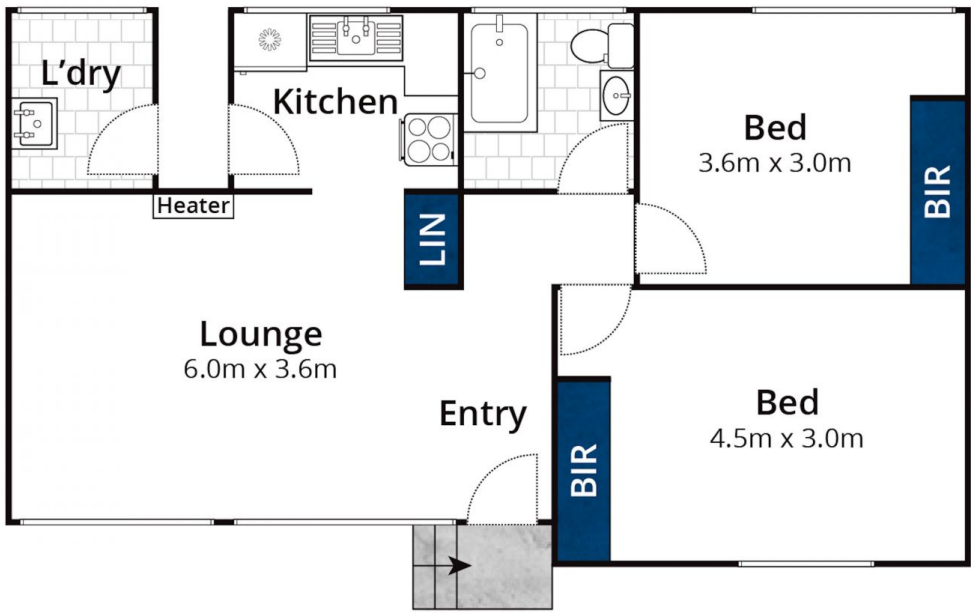
Land Rates: \$1,666.57 pa
Water Rates: \$1,047 pa + usage

Type : House
Price : \$ 455,000
Land Size : 738.4 sqm
View : <https://www.goulburnrealestate.com.au/sale/nsw/southern-tablelands/goulburn/residential/house/8162169>



Brody Willis
02 4822 8711

[For full version visit the website](#)



(Not In Position)

Whilst bwrn.com.au has made every attempt to ensure the accuracy of the floor plan contained here, measurements are approximate and no responsibility is taken for any error, omission, or mis-statement. This plan is for illustrative purposes only.

8 Darcy Crescent, Goulburn