

42a Stone Place Goulburn NSW

3 2 2

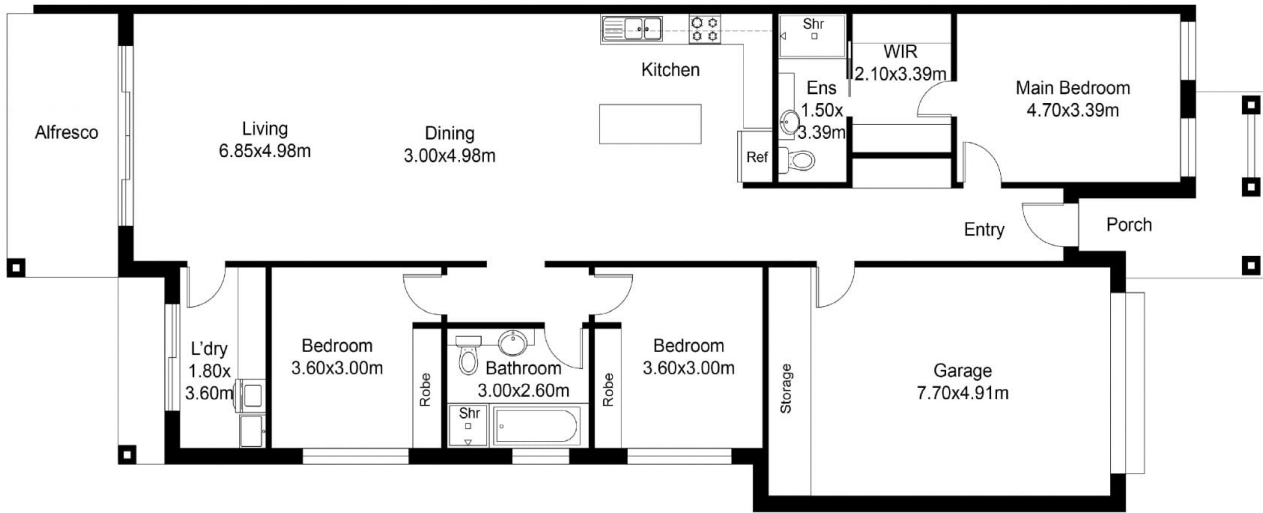
- * Behind the mild mannered exterior this brand new home offers a level of quality and style rarely found
- * High ceilings, wide hallways, large rooms and an abundance of natural light which is enhanced by the delightful north rear aspect
- * There are three bedrooms and two bathrooms. Both the ensuite and main bathroom have floor to ceiling tiles - they really are quite stunning. The walk-in wardrobe to the main bedroom is very large & is fully fitted with shelves, draws and hanging space
- * The chef's kitchen is the hub of the home with quality appliances & a huge island bench which overlooks the open plan dining and living room. Step straight out to the alfresco entertaining area - perfect for summer barbeques in the coming months

Type : House
Price : \$ 800,000
Land Size : 588.4 sqm
View : <https://www.goulburnrealestate.com.au/sale/nsw/southern-tablelands/goulburn/residential/house/8132401>



Barry McEntee
02 4822 8711

[For full version visit the website](https://www.goulburnrealestate.com.au)



FLOOR PLAN

This floor plan including furniture, fixture measurements and dimensions are approximate and for illustrative purposes only. BoxBrownie.com gives no guarantee, warranty or representation as to the accuracy and layout. All enquiries must be directed to the agent, vendor or party representing this floor plan.

42a Stone Place, Goulburn