



20 Lisgar Street Goulburn NSW

4 1 3

* Charming character home set on a huge block of land approx. 2125 m2 or just over half of acre with a wide frontage and access down both side of the home to a parklike back yard

* There appears to be plenty of opportunity to value add to the site and possibly potential for subdivision however purchasers would need to make their own enquiries with the local council and other relevant authorities

* The current home has loads of period features such as a beautiful marble fireplace surround and a flexible floorplan which offers 4 bedrooms and multiple living rooms

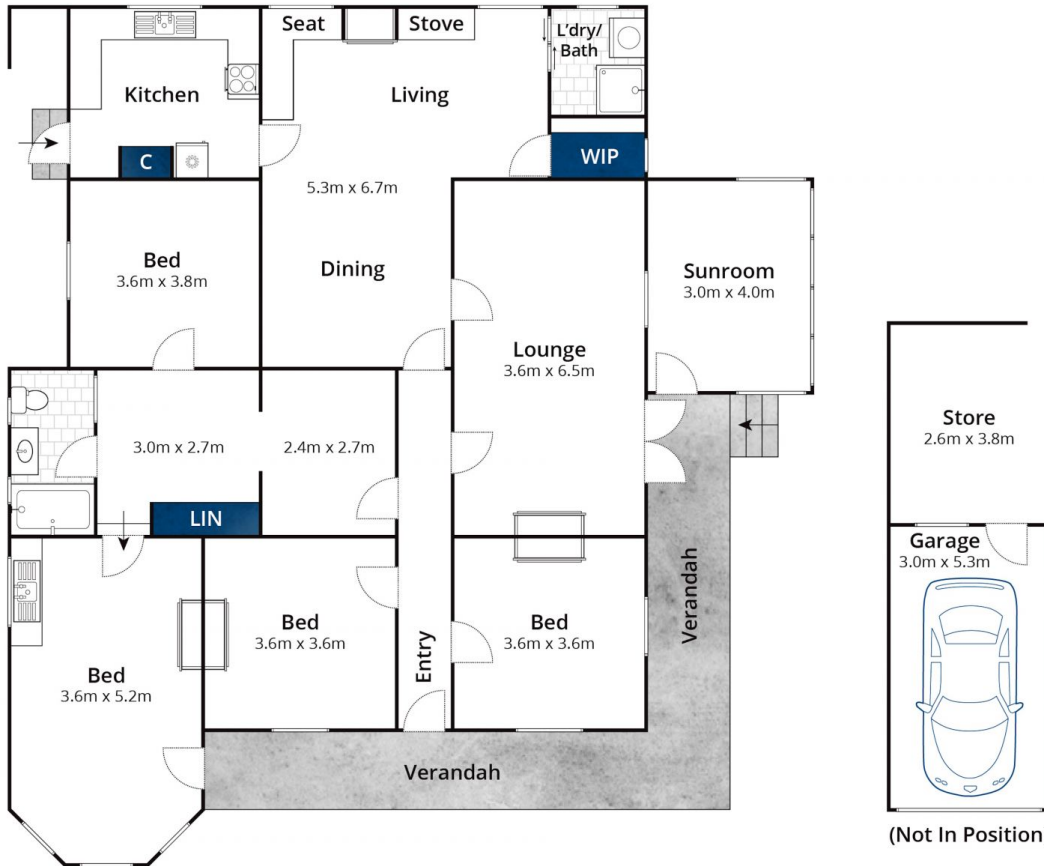
* There is a very large formal lounge room, casual living & dining space and a cracking sunroom taking full advantage of the north aspect. Excellent gas heating plus a combustion fire

Type : House
Price : \$ 740,000
Land Size : 2124.5 sqm
View : <https://www.goulburnrealestate.com.au/sale/nsw/southern-tablelands/goulburn/residential/house/8086229>



Barry McEntee
02 4822 8711

[For full version visit the website](https://www.goulburnrealestate.com.au)



Approx House Area 175m²

Whilst bwrn.com.au has made every attempt to ensure the accuracy of the floor plan contained here, measurements are approximate and no responsibility is taken for any error, omission, or mis-statement. This plan is for illustrative purposes only.

20 Lisgar Street, Goulburn