



**39 Sanctuary Drive Goulburn NSW**

5 3 7

\* Sitting proudly on 2000m2 in an elevated position is this master built home which is a testament to style, practicality and luxury. Built using the highest quality fittings and finishes, it's a home that would be the envy of every guest.

\* 5 Oversized bedrooms including the master bedroom - one of which benefits from a separate access and offers a living space which can be utilised for in-law and guest accommodation. The main bedroom exudes luxury and comfort with a window day bed, walk through robe complete with high end cabinetry along with a colossal ensuite.

\* Main living space is north facing and takes in views over the Wollondilly River and off to the rolling hills in the distance. This area is flexible in the way it can be used day to day with options of both east and west facing outdoor

**Type** : House  
**Price** : \$ 1,450,000  
**Land Size** : 2000 sqm  
**View** : <https://www.goulburnrealestate.com.au/7962652>

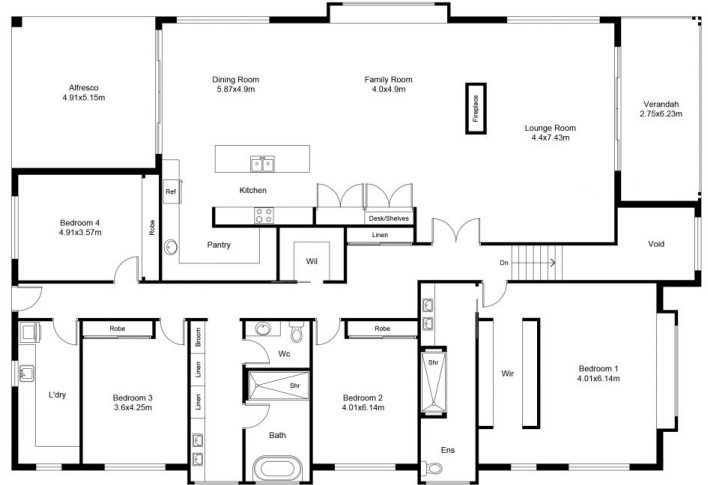


**Brody Willis**  
02 4822 8711

[For full version visit the website](https://www.goulburnrealestate.com.au)



GROUND FLOOR PLAN



FIRST FLOOR PLAN

This floor plan including furniture, fixture measurements and dimensions are approximate and for illustrative purposes only. BoxBrownie.com gives no guarantee, warranty or representation as to the accuracy and layout. All enquiries must be directed to the agent, vendor or party representing this floor plan.

**39 Sanctuary Drive, Goulburn**