



**34 Hovell Street Goulburn NSW**

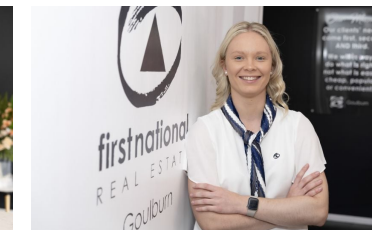
3 1

- \* Fantastic entry level property set on a brilliant 904m2 block of land close to the Goulburn CBD
- \* The home features 3 bedrooms, the main is an excellent size and is complete with built-in wardrobe
- \* The remodelled bathroom is tiled right to the ceiling with a deep bath tub which is ideal for a relaxing soak at the end of the day
- \* Upgraded kitchen with stone benchtop is light and bright and overlooks a delightful decked entertaining area
- \* The large block provides plenty of options including room for a big shed or the potential to value add to the block with a second dwelling (subject to council approval)
- \* There is currently side access with a concrete slab already in place - you could easily add a carport for undercover car accommodation

**Type** : House  
**Price** : \$ 485,000  
**Land Size** : 904.2 sqm  
**View** : <https://www.goulburnrealestate.com.au/sale/nsw/southern-tablelands/goulburn/residential/house/7905380>

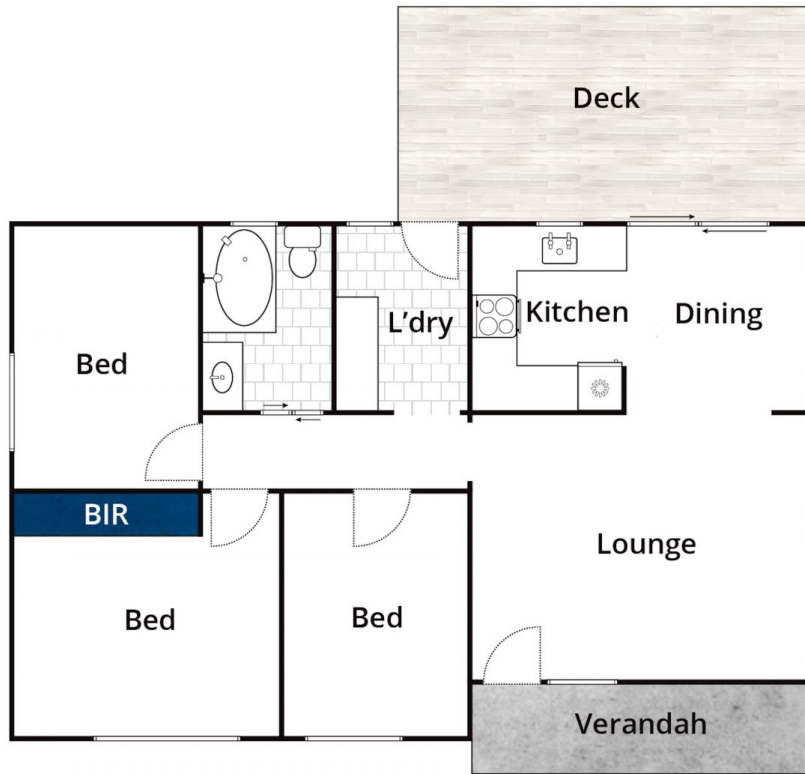


**Barry McEntee**  
02 4822 8711



**Bella Greig**  
02 4822 8711

[For full version visit the website](https://www.goulburnrealestate.com.au)



Whilst [bwrn.com.au](http://bwrn.com.au) has made every attempt to ensure the accuracy of the floor plan contained here, measurements are approximate and no responsibility is taken for any error, omission, or mis-statement. This plan is for illustrative purposes only.

## 34 Hovell Street, Goulburn