



19 Heath Street Goulburn NSW

4 2 2

* This modern 4 bedroom family home offers unbeatable value for money. Located in the highly sought after Belmore Estate this property is very close to the popular Wollondilly Walking Track

* The block is very low maintenance and offers side access which is perfect for a caravan or boat

* There are multiple living rooms and the flexible floorplan can offer up to 5 bedrooms if required, the main bedroom has an ensuite and walk-in wardrobe

* Open plan kitchen, dining and living space opens directly to the alfresco entertaining area with a sunny north-east aspect

* Double garage with auto entry and internal access to the home, 10 000 litre water tank and fully ducted reverse cycle air conditioning

Type : House
Price : \$ 750,000
Land Size : 661 sqm
View : <https://www.goulburnrealestate.com.au/sale/nsw/southern-tablelands/goulburn/residential/house/7900548>

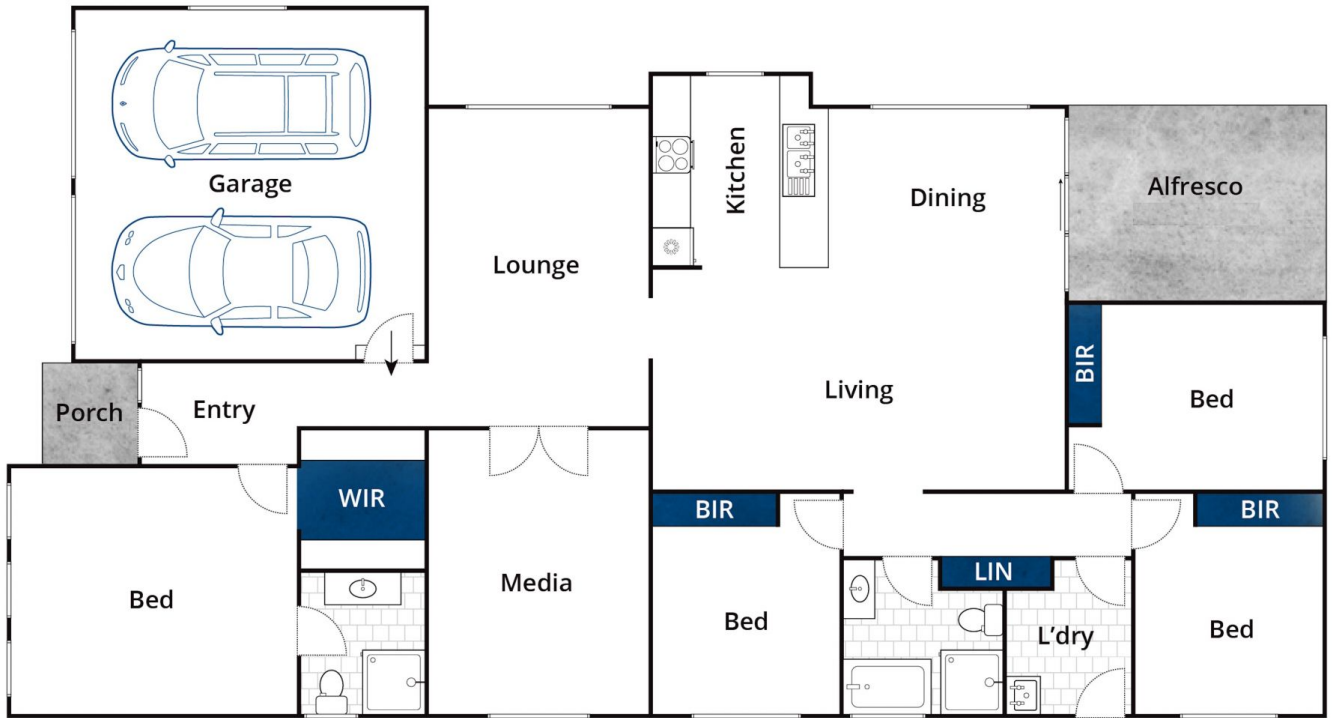
[For full version visit the website](https://www.goulburnrealestate.com.au)



Barry McEntee
02 4822 8711



Bella Greig
02 4822 8711



Whilst bwrn.com.au has made every attempt to ensure the accuracy of the floor plan contained here, measurements are approximate and no responsibility is taken for any error, omission, or mis-statement. This plan is for illustrative purposes only.

19 Heath Street, Goulburn