



21 Melliodora Drive Goulburn NSW

4 2 2

* Very appealing 4 bedroom home set in an extremely quiet location with lovely views across farmland and playing fields to the historic Goulburn CBD which is literally only 3 minutes drive from your front door

* The colour scheme is extremely attractive, as is the modern kitchen which overlooks an open plan dining and living space. Step straight out to the alfresco entertaining area which is very private - modern living at its best!

* Each of the bedrooms are a good size and the main enjoys a large walk-in robe and stylish ensuite. Both bathrooms are tiled from the floor to the ceiling and are finished to a high standard

* There is a second living area which is ideal for larger families. You will be impressed by the plantation shutters throughout and the climate control is first class - hydronic

Type : House
Price : \$ 770,000
Land Size : 878.5 sqm
View : <https://www.goulburnrealestate.com.au/sale/nsw/southern-tablelands/goulburn/residential/house/7839049>

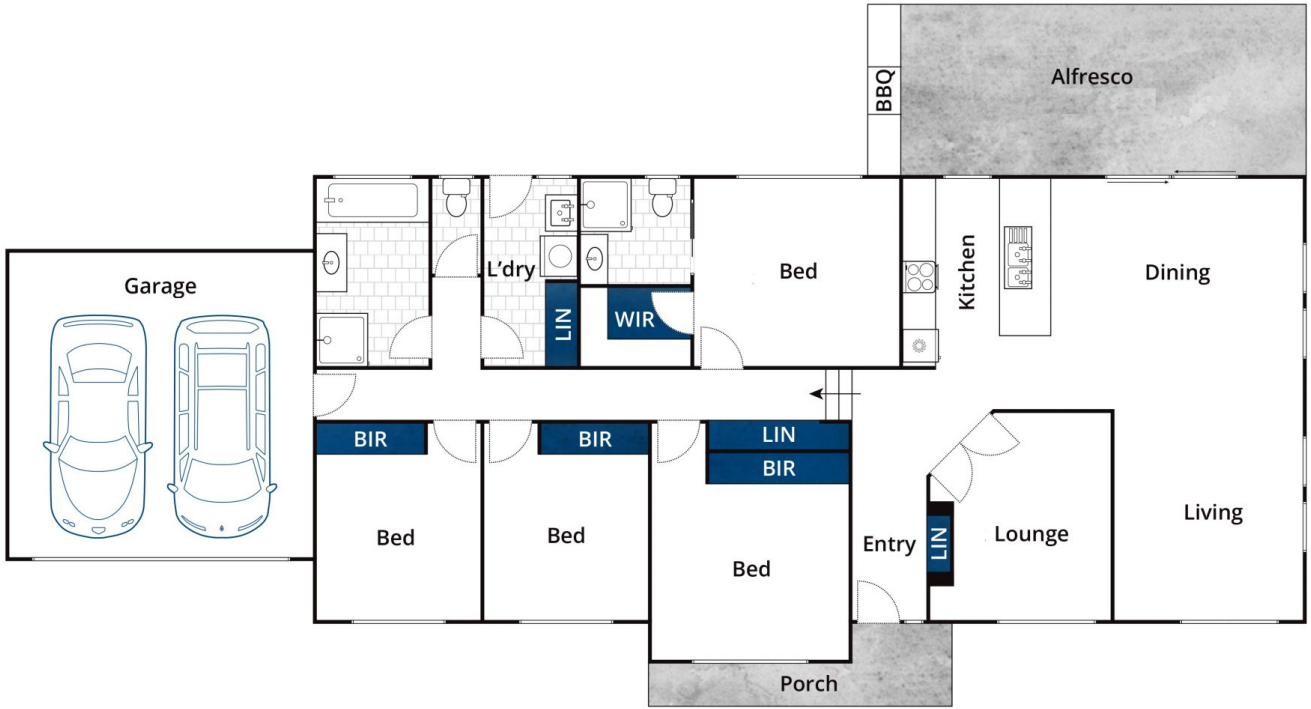


Barry McEntee
02 4822 8711



Bella Greig
02 4822 8711

[For full version visit the website](https://www.goulburnrealestate.com.au)



Whilst bwrm.com.au has made every attempt to ensure the accuracy of the floor plan contained here, measurements are approximate and no responsibility is taken for any error, omission, or mis-statement. This plan is for illustrative purposes only.

21 Melliodora Drive, Goulburn