



135 Clinton Street Goulburn NSW

3 2 1

* Charming 3 bedroom cottage style home complete with a traditional picket fence.

* Ideally positioned just a stone's throw from Victoria Park with its popular children's playground, walking track, rose garden, playing fields and state of the art aquatic centre

* The home enjoys a flexible floorplan with 2 bathrooms and an upgraded kitchen overlooking open plan living and dining areas

* There is a brilliant north facing decked entertaining area and a private rear yard

* Lock up garage plus ample parking for multiple vehicles although you might not need a car given the central location within easy walking distance to the main street, hospital, primary and high schools

* A delightful home with loads of appeal, be quick to

Type : House
Price : \$ 570,000
Land Size : 379.4 sqm
View : <https://www.goulburnrealestate.com.au/sale/nsw/southern-tablelands/goulburn/residential/house/7776582>

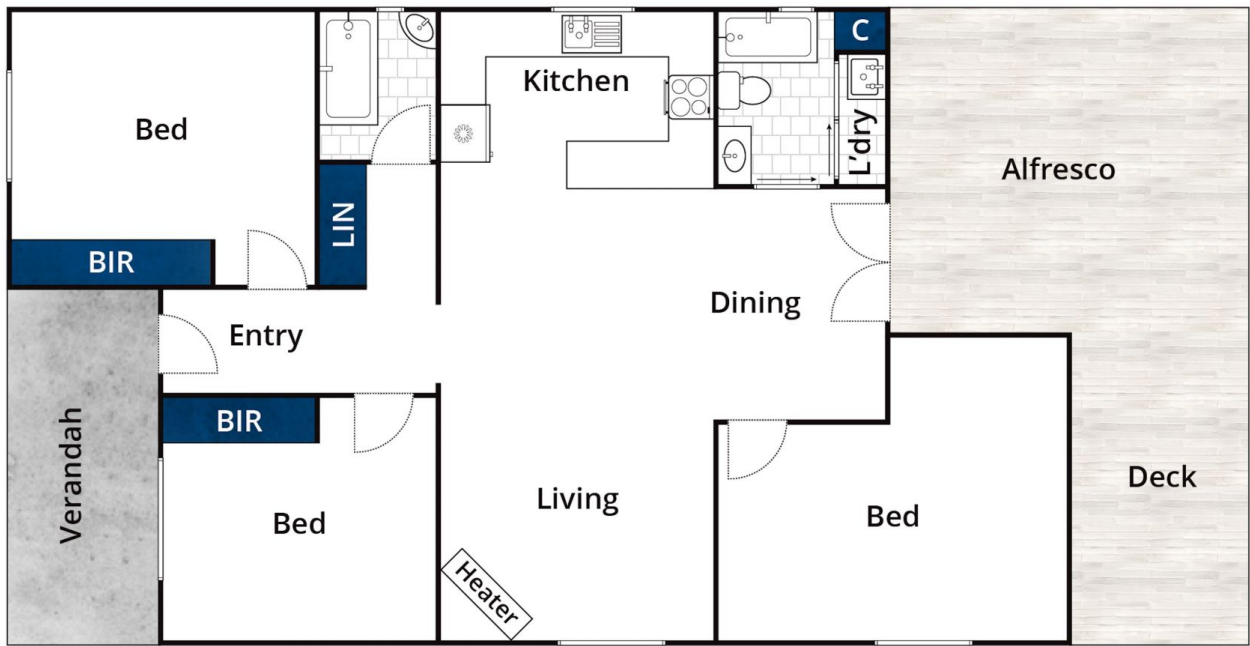


Barry McEntee
02 4822 8711



Bella Greig
02 4822 8711

[For full version visit the website](https://www.goulburnrealestate.com.au)



Whilst bwrn.com.au has made every attempt to ensure the accuracy of the floor plan contained here, measurements are approximate and no responsibility is taken for any error, omission, or mis-statement. This plan is for illustrative purposes only.

135 Clinton Street, Goulburn