



**16 Henry Street Goulburn NSW**

5 🛏 3 🚿 4 🚗

\* Nestled atop a very quiet cul-de-sac, this magnificent house boasts breathtaking and expansive views of the picturesque local area. The property is situated on a sprawling parcel of land exceeding 1000 square meters, providing ample space for pets and children, while also accommodating a granny flat and a very large shed.

\* The main house itself has an abundance of architectural features and natural light. The exterior features a timeless cedar facade, complemented by large, strategically placed windows and a charming front porch that welcomes you into the home.

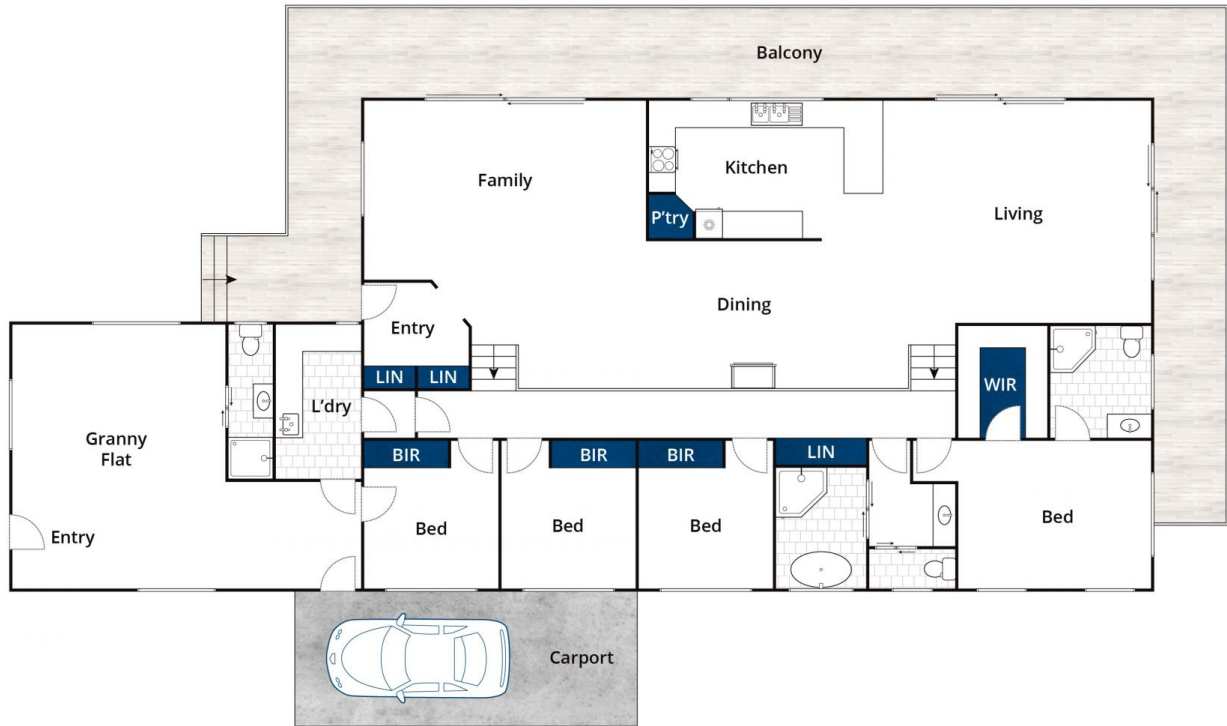
\* As you step inside, you are immediately struck by the sense of space and natural light. The open-concept living areas are generously proportioned, with high ceilings and large windows that frame the mesmerizing views. The

**Type** : House  
**Price** : \$ 850,000  
**Land Size** : 1096.4 sqm  
**View** : <https://www.goulburnrealestate.com.au/sale/nsw/southern-tablelands/goulburn/residential/house/7750857>



**Brody Willis**  
02 4822 8711

[For full version visit the website](https://www.goulburnrealestate.com.au)



Whilst [bwrn.com.au](http://bwrn.com.au) has made every attempt to ensure the accuracy of the floor plan contained here, measurements are approximate and no responsibility is taken for any error, omission, or mis-statement. This plan is for illustrative purposes only.

16 Henry Street, Goulburn



HENRY STREET



SITE PLAN - For Marketing Purposes Only  
\* NOT TO SCALE

148 Auburn Street,  
Goulburn

[www.goulburnre.com.au](http://www.goulburnre.com.au)  
We put you first

4822 8711