



41 Hoddle Avenue Goulburn NSW

5 🛏 2 🚿 2 🚗

* Nestled in the heart of one of Goulburn's most coveted neighbourhoods, this large family home is thoughtfully designed to cater for all families.

*The home features two separate living areas, providing ample space for family gatherings and entertaining guests.

* The property boasts four well-appointed bedrooms, each with built in wardrobes. Storage in this home is simply not an issue.

* The heart of the home is the spacious kitchen and dining area, which is perfect for entertaining, with so much natural light entering this area, whether you are making dinner or entertaining guests, this kitchen has you covered.

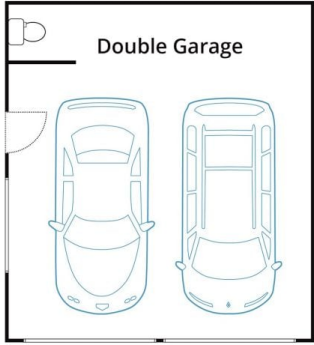
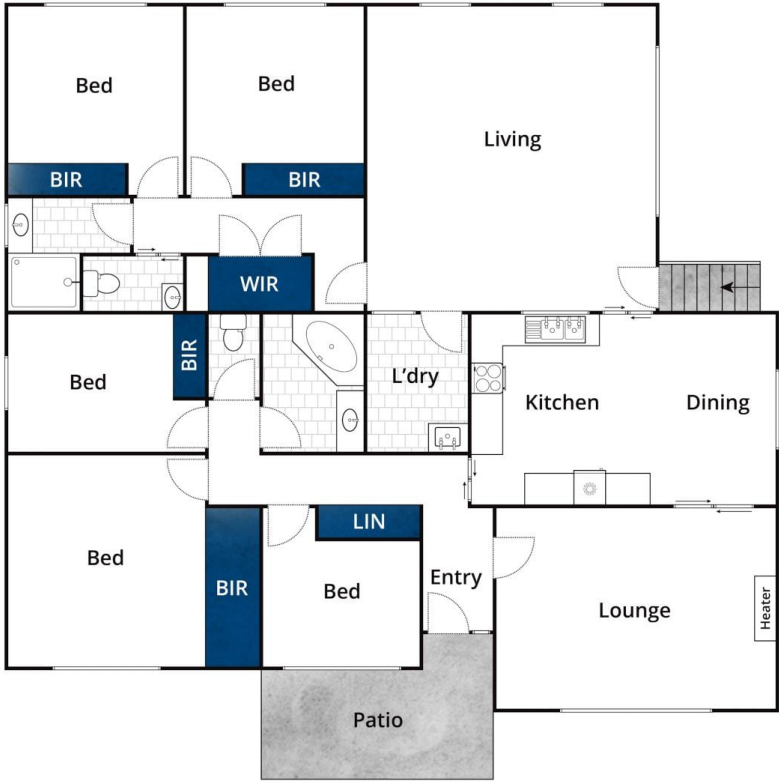
* Ducted heating, gas heaters and a split system air conditioner. Climate control is no issue all year round. Also featuring double-glazed windows at the front of the home,

Type : House
Price : \$ 725,000
Land Size : 904.2 sqm
View : <https://www.goulburnrealestate.com.au/sale/nsw/southern-tablelands/goulburn/residential/house/7748595>



Bella Greig
02 4822 8711

[For full version visit the website](https://www.goulburnrealestate.com.au)



(Not In Position)

Whilst bwrn.com.au has made every attempt to ensure the accuracy of the floor plan contained here, measurements are approximate and no responsibility is taken for any error, omission, or mis-statement. This plan is for illustrative purposes only.

41 Hoddle Avenue, Goulburn