



**19 Parkside Place Goulburn NSW**

3 2 1

\* This well-maintained property is the epitome of comfortable and convenient living, offering low-maintenance features.

\* A thoughtfully designed layout that maximizes both space and functionality. The large living room seamlessly connects the dining area and kitchen, creating an airy and inviting atmosphere with plenty of natural light.

\* 3 Generous bedrooms and 2 bathrooms plus an ensuite to the main.

\* This home will suit various buyers, especially those looking for a low maintenance property in a quiet complex.

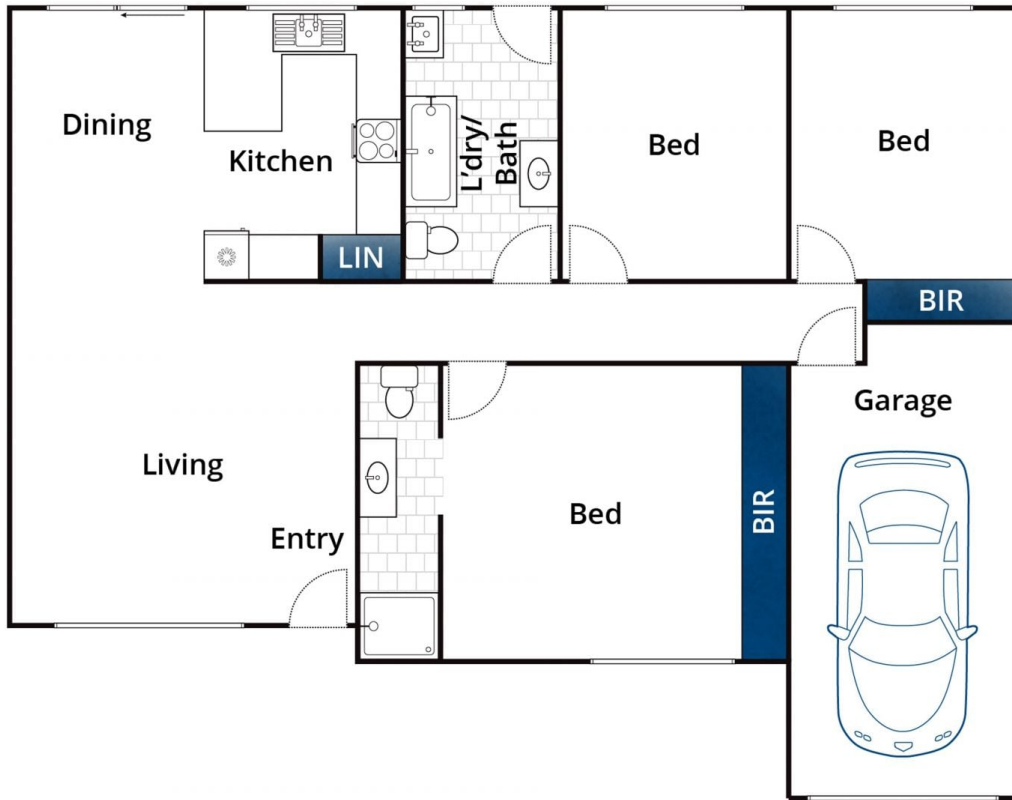
\* Perfectly positioned with the Wollondilly walking track only minutes from your doorstep. It's an ideal home for those seeking a hassle-free living experience in a property that's been lovingly cared for and is ready to welcome its next

**Type** : House  
**Price** : \$ 429,000  
**Land Size** : 188 sqm  
**View** : <https://www.goulburnrealestate.com.au/sale/nsw/southern-tablelands/goulburn/residential/house/7745860>



**Bella Greig**  
02 4822 8711

[For full version visit the website](https://www.goulburnrealestate.com.au)



Whilst [bwrn.com.au](http://bwrn.com.au) has made every attempt to ensure the accuracy of the floor plan contained here, measurements are approximate and no responsibility is taken for any error, omission, or mis-statement. This plan is for illustrative purposes only.

## 19 Parkside Place, Goulburn