



**40 Komungla Crescent Goulburn NSW**

6 3 2

\* Very large tri-level home with a flexible floor plan that can offer up to 6 bedrooms if required along with 3 separate living areas and a good sized dining room right next to the kitchen

\* The floorplan has been previously used as a 4 bedroom home plus study with an extra bedroom created off the downstairs rumpus room to create separate in law accommodation with a bathroom on that lower level

\* The main bedroom has an ensuite and there are 3 bathrooms and 4 toilets in total so even the largest of families can be accommodated

\* There are 2 really spacious and separate living rooms on the main level with the downstairs rumpus allowing plenty of different spaces for a family to spread out when required

\* The kitchen is light and bright thanks to a north aspect

**Type** : House  
**Price** : \$ 535,000  
**Land Size** : 766.1 sqm  
**View** : <https://www.goulburnrealestate.com.au/sale/nsw/southern-tablelands/goulburn/residential/house/7672840>

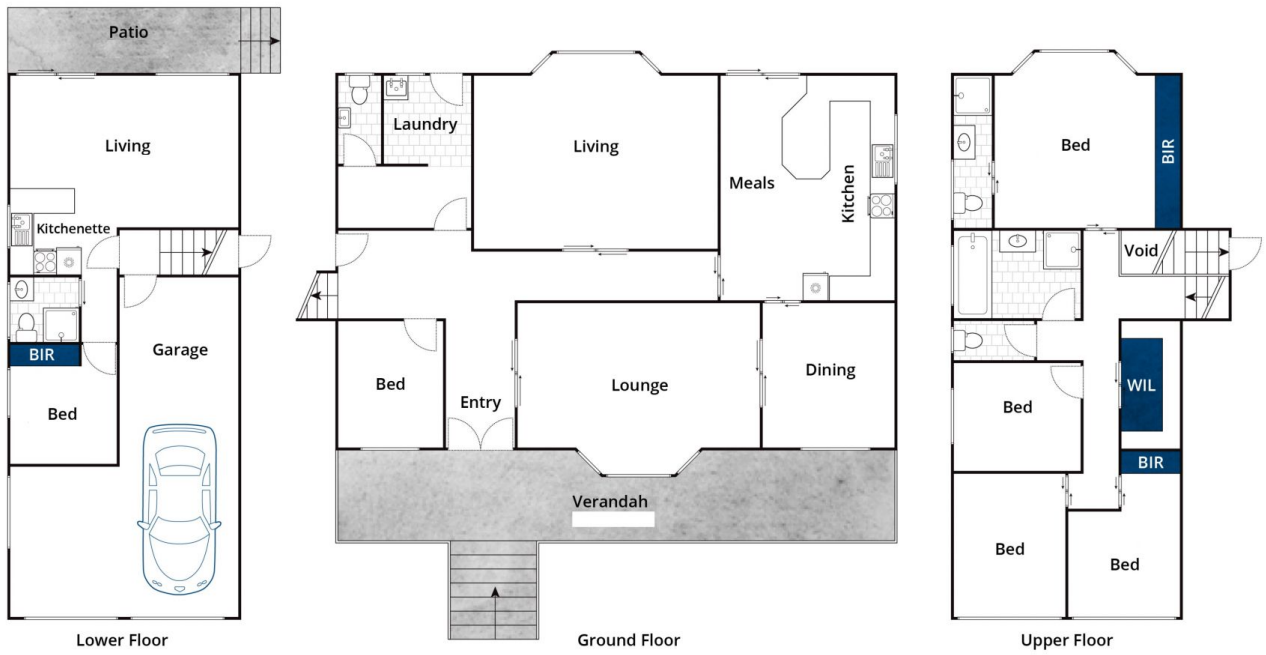
[For full version visit the website](https://www.goulburnrealestate.com.au)



**Barry McEntee**  
02 4822 8711



**Bella Greig**  
02 4822 8711



Whilst [bwrn.com.au](http://bwrn.com.au) has made every attempt to ensure the accuracy of the floor plan contained here, measurements are approximate and no responsibility is taken for any error, omission, or mis-statement. This plan is for illustrative purposes only.

## 40 Komungla Crescent, Goulburn