



8 Heath Street Goulburn NSW

4 2 2

* Located in the highly sought after Belmore Estate this stunning master-built 4-bedroom home has a list of extras too long to mention and is a property that needs to be seen to be fully appreciated

* The heart of the home is an open-plan living area that seamlessly combines the kitchen, dining, and lounge spaces which benefit from an abundance of natural light. The gourmet kitchen is a chef's dream, featuring high-end appliances, sleek cabinetry, and a central island that doubles as a breakfast bar

* Heating and cooling throughout the entire property as well as a cosy wood fire ensure year-round comfort, allowing you to enjoy a pleasant indoor climate no matter the season

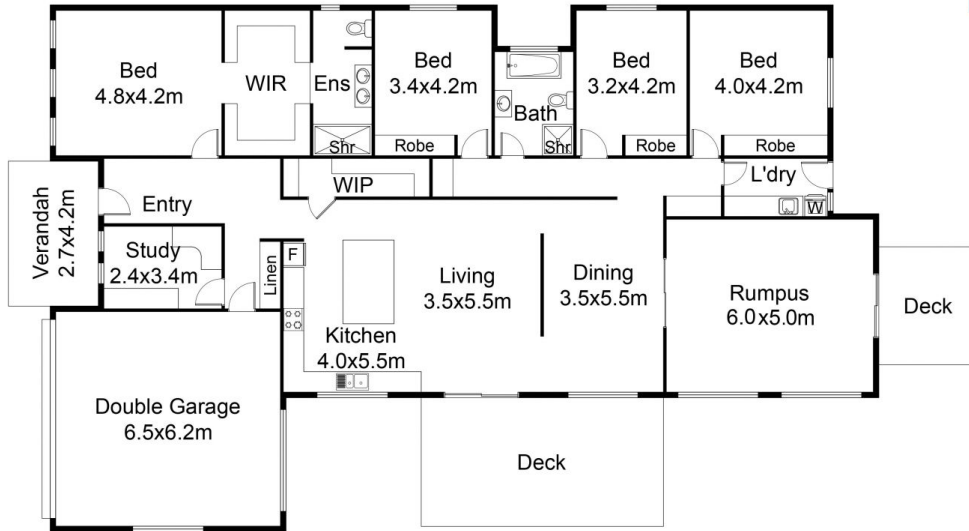
* An incredible amount of off street parking with the

Type : House
Price : \$ 995,000
Land Size : 792 sqm
View : <https://www.goulburnrealestate.com.au/sale/nsw/southern-tablelands/goulburn/residential/house/7633931>

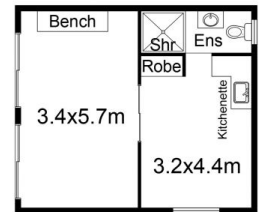


Brody Willis
02 4822 8711

[For full version visit the website](https://www.goulburnrealestate.com.au)



FLOOR PLAN



STUDIO
FLOOR PLAN

This floor plan including furniture, fixture measurements and dimensions are approximate and for illustrative purposes only. BoxBrownie.com gives no guarantee, warranty or representation as to the accuracy and layout. All enquiries must be directed to the agent, vendor or party representing this floor plan.

8 Heath Street, Goulburn