



510 Auburn Street Goulburn NSW

3 1 4

- Nestled just a stone's throw away from the vibrant city centre, this exceptional property presents a rare opportunity to acquire a double block with rear lane access in close proximity to the Central Business District (CBD). Situated in a highly sought-after location, this property boasts a unique combination of convenience, versatility, and potential.

- The block is 992.7m² or just under a quarter of an acre in the old terminology and the frontage is over 21 metres. Most importantly the existing dwelling is built on one side of the block lending the site to possible subdivision and/or construction of a second dwelling (dual occupancy). Any value add to the site is completely subject to council approval.

- The current home has a flexible floorplan and a number of

Type : House
Price : \$ 650,000
Land Size : 992.7 sqm
View : <https://www.goulburnrealestate.com.au/sale/nsw/southern-tablelands/goulburn/residential/house/7584517>

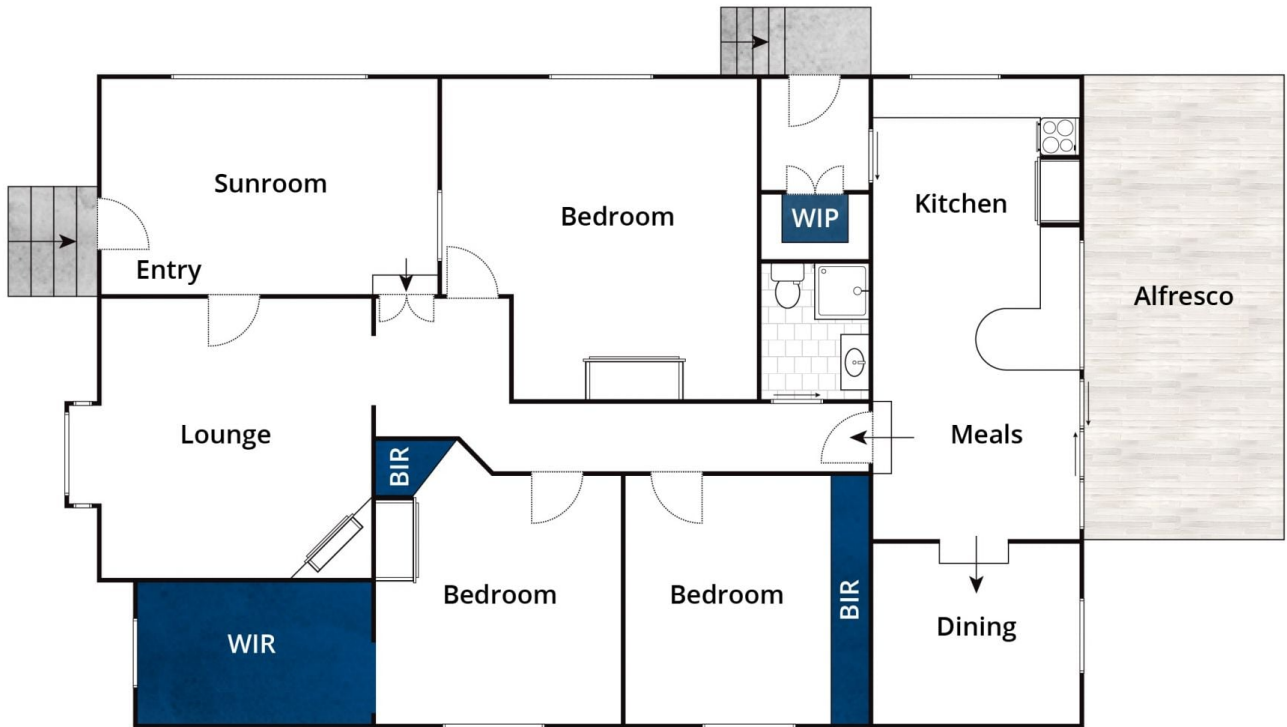


Barry McEntee
02 4822 8711



Bella Greig
02 4822 8711

[For full version visit the website](https://www.goulburnrealestate.com.au)



Approx House Area 145m²

Whilst bwrn.com.au has made every attempt to ensure the accuracy of the floor plan contained here, measurements are approximate and no responsibility is taken for any error, omission, or mis-statement. This plan is for illustrative purposes only.

510 Auburn Street, Goulburn