



6 Tara Place Goulburn NSW

3 **1**

- * A fantastical entry level property - exceptionally well priced for today's market conditions
- * The home offers 3 bedrooms and is in good condition having had fresh paint and carpet applied over recent years
- * Both the kitchen and bathroom have been updated and there is reverse cycle air conditioning
- * Excellent block - approx. 758m2 which provides a terrific backyard and plenty of room to build a garage and workshop
- * Quiet cul-de-sac location in a popular, established part of town within close proximity to the Base Hospital and walking distance to schools
- * Excellent value for money and a great opportunity for first home buyers. Investors should note this property has a proven track record as a rental property.

Type : House
Price : \$ 470,000
Land Size : 758.8 sqm
View : <https://www.goulburnrealestate.com.au/sale/nsw/southern-tablelands/goulburn/residential/house/7580578>

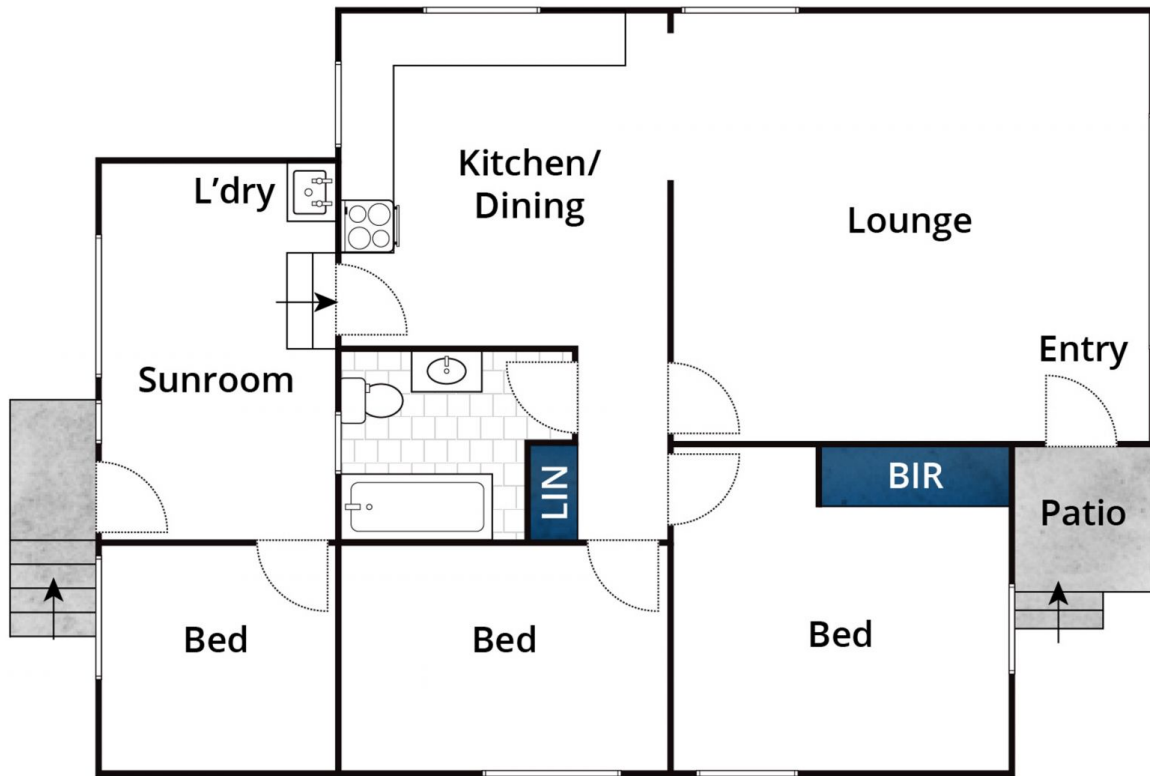


Barry McEntee
02 4822 8711



Bella Greig
02 4822 8711

[For full version visit the website](https://www.goulburnrealestate.com.au)



Approx House Area 90m²

Whilst bwrn.com.au has made every attempt to ensure the accuracy of the floor plan contained here, measurements are approximate and no responsibility is taken for any error, omission, or mis-statement. This plan is for illustrative purposes only.

6 Tara Place, Goulburn