



11 Tara Place Goulburn NSW

3 1 2

* Located in a quiet cul-de-sac on an 1107m2 block of land that has incredible garage storage via side access and room for extra shedding if needed.

* 3 bedrooms, with the flexibility of creating another as well as 3 living and dining spaces.

* Eat in style kitchen with walk in pantry, dishwasher and an abundance of storage space.

* Scope to improve to your liking with the peace of mind of a quiet location just minutes to the CBD, Hospital and Victoria Park precincts.

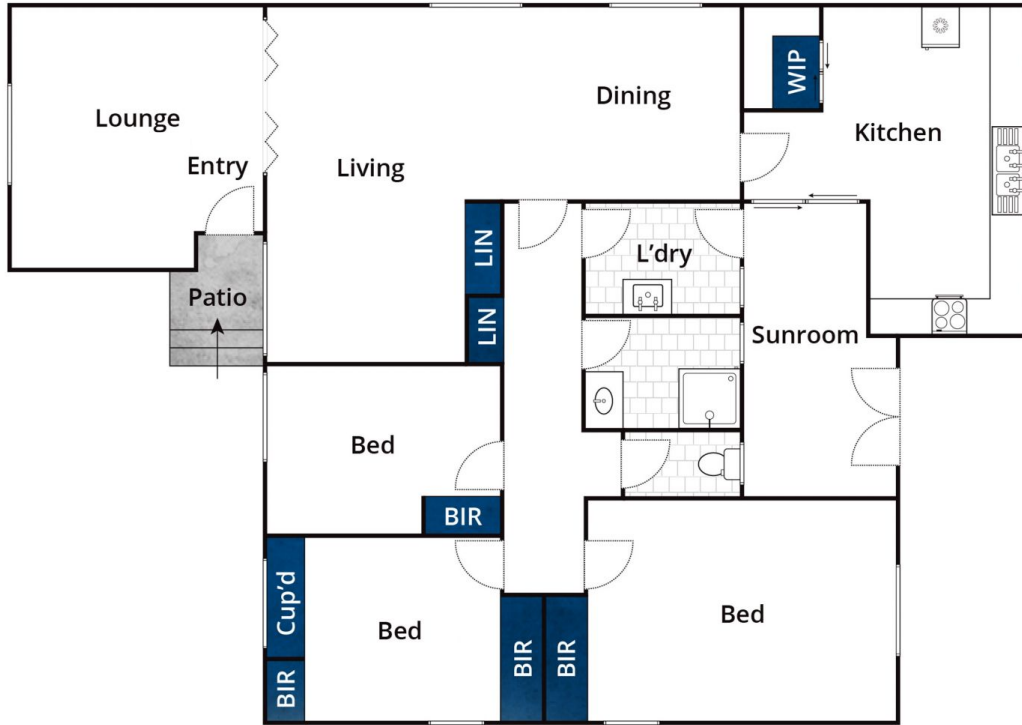
Rates - \$1788.24 pa
Water - \$984 pa + usage
Rent - \$440-\$460 per week approx.

[For full version visit the website](https://www.goulburnrealestate.com.au)

Type : House
Price : \$ 610,000
Land Size : 1107 sqm
View : <https://www.goulburnrealestate.com.au/sale/nsw/southern-tablelands/goulburn/residential/house/7580497>



Brody Willis
02 4822 8711



Approx House Area 144m²

Whilst bwrn.com.au has made every attempt to ensure the accuracy of the floor plan contained here, measurements are approximate and no responsibility is taken for any error, omission, or mis-statement. This plan is for illustrative purposes only.

11 Tara Place, Goulburn