



**36 Joshua Street Goulburn NSW**

**3** **1**

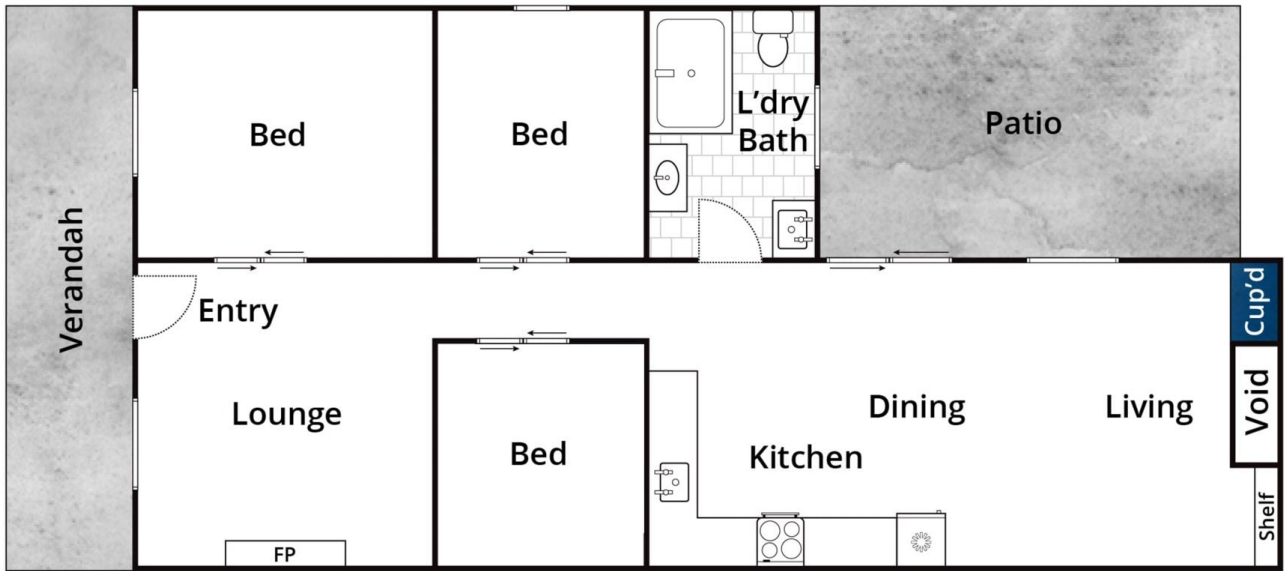
- \* Character filled cottage in a cul de sac location. Close to the CBD, schools, walking tracks and the North Goulburn Post Office.
- \* Flexible 3 bedroom configuration with 2 living spaces.
- \* Open plan kitchen, living and dining area. The kitchen features stone benchtops, gas cooking, dishwasher and plenty of storage.
- \* Cosy wood fire and several gas points throughout.
- \* Very large backyard with established trees and 2 sheds offering plenty of storage. Side access allows for off street parking as well as room for extra garaging if needed.
- \* A cute, character cottage in a great location in an affordable price range. Get in touch to book your private inspection.

**Type** : Semi Detached  
**Price** : \$ 490,000  
**Land Size** : 626 sqm  
**View** : <https://www.goulburnrealestate.com.au/sale/nsw/southern-tablelands/goulburn/residential/semi-detached/7492590>



**Brody Willis**  
**02 4822 8711**

[For full version visit the website](https://www.goulburnrealestate.com.au)



Approx House Area 80m<sup>2</sup>

Whilst [bwrn.com.au](http://bwrn.com.au) has made every attempt to ensure the accuracy of the floor plan contained here, measurements are approximate and no responsibility is taken for any error, omission, or mis-statement. This plan is for illustrative purposes only.

## 36 Joshua Street, Goulburn