

32 Coromandel Street Goulburn NSW

3 2 2

- * Neat and tidy 3 bedroom home in the ever popular West Goulburn area
- * Close to schools, parks and the CBD with easy access to the Canberra exit
- * Large 836m2 block of land with plenty of side access to the backyard. Room for extra sheds, trailers, caravans and still have space for the kids to play
- * Renovated kitchen and bathrooms with all the mod cons. Near new flooring throughout
- * Large, covered outdoor area perfect for entertaining
- * Built in wardrobes to each bedroom. Good size living and separate dining rooms.

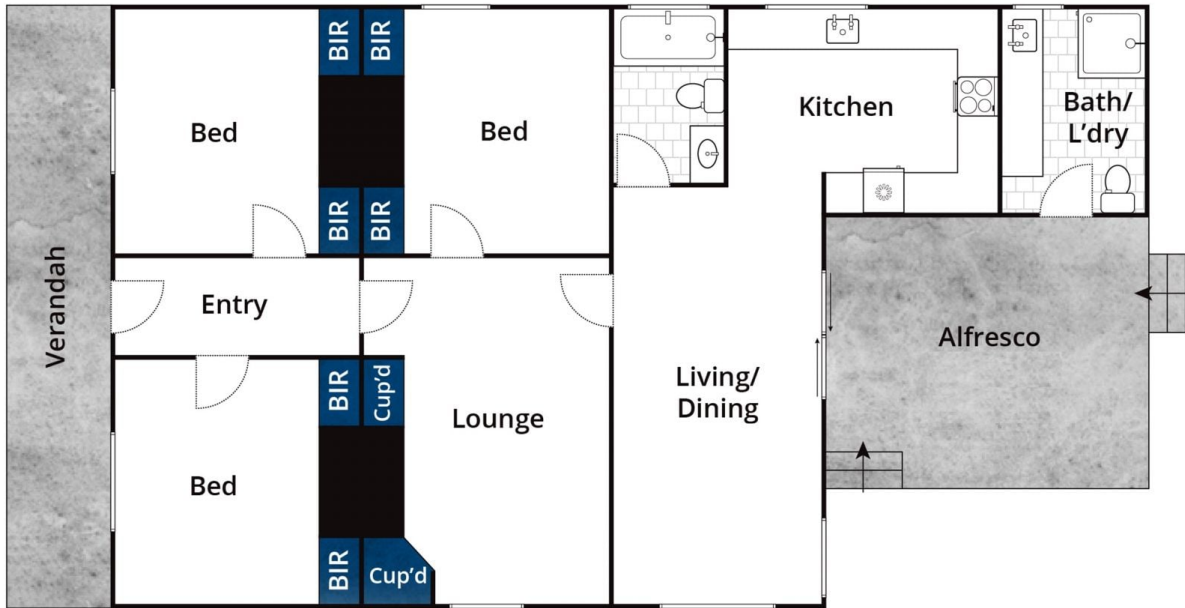
Type : House
Price : \$ 555,000
Land Size : 836 sqm
View : <https://www.goulburnrealestate.com.au/sale/nsw/southern-tablelands/goulburn/residential/house/7303579>

Land Rates: \$1,632.72 pa

[For full version visit the website](#)



Brody Willis
02 4822 8711



Approx House Area 107m²

Whilst bwrn.com.au has made every attempt to ensure the accuracy of the floor plan contained here, measurements are approximate and no responsibility is taken for any error, omission, or mis-statement. This plan is for illustrative purposes only.

32 Coromandel Street, Goulburn