



1 Ruby Street Goulburn NSW

3 1 1

* 3 bedroom home located in a quiet street and a flat and level walk to the CBD. Located only minutes from the new hospital, Wollondilly walking tracks, Police Academy and the CBD there is something for everyone in this location.

* Multiple living spaces in the home are of great benefit combined with the outdoor deck allowing flexibility in how the home is utilised

* Kitchen, dining and living spaces flow well together to create a very pleasing yet functional floorplan.

* Off street parking is available, featuring a single garage, driveway and good yard access.

* Either a great starter home or a set and forget investment, this home will appeal to many.

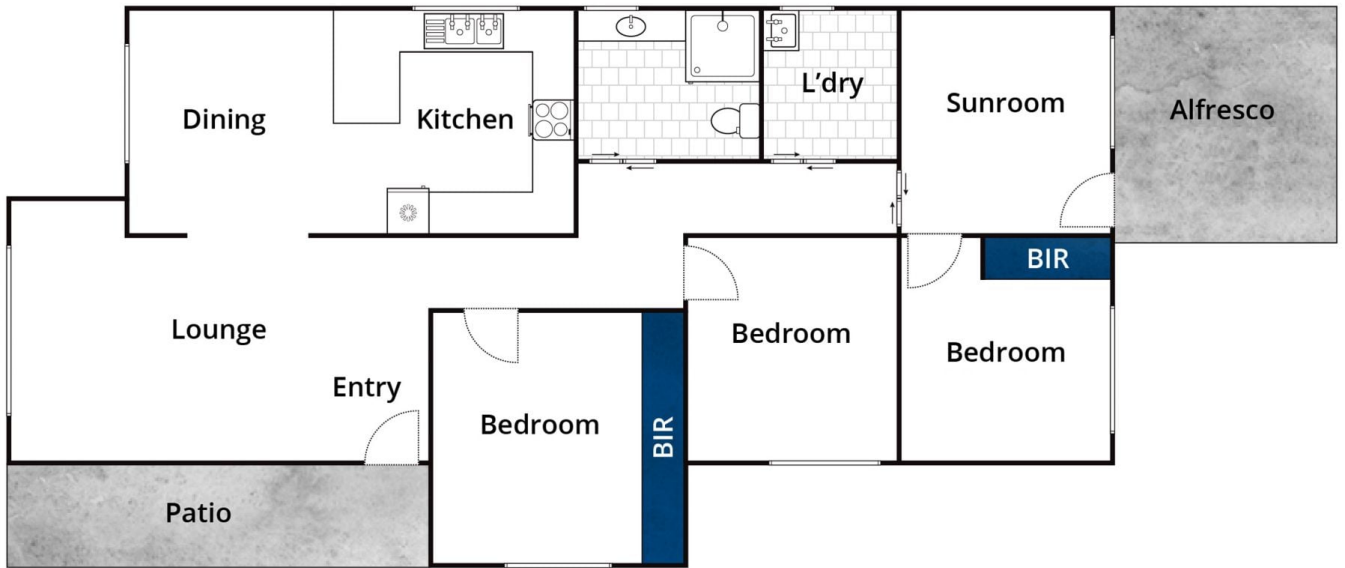
* Long term tenant in place who would love to stay on, lease in place until April 2023.

Type : House
Price : \$ 489,000
Land Size : 513 sqm
View : <https://www.goulburnrealestate.com.au/sale/nsw/southern-tablelands/goulburn/residential/house/7224726>



Glenn Power
02 4822 8711

[For full version visit the website](https://www.goulburnrealestate.com.au)



Whilst bwrn.com.au has made every attempt to ensure the accuracy of the floor plan contained here, measurements are approximate and no responsibility is taken for any error, omission, or mis-statement. This plan is for illustrative purposes only.

1 Ruby Street, Goulburn