



3/22 Church Street Goulburn NSW

3 2 1

* Truly a rare opportunity to purchase a first class apartment, exceptionally well located in a quiet position overlooking expansive green space and St Saviours Cathedral, literally a stone's throw from the heart of the CBD

* "Bentley" is a landmark property with only 4 apartments - Architecturally designed and extremely well built

* The stylish front entry provides security access & intercom system, and there is an additional entrance from the rear with its own private stair chair lift

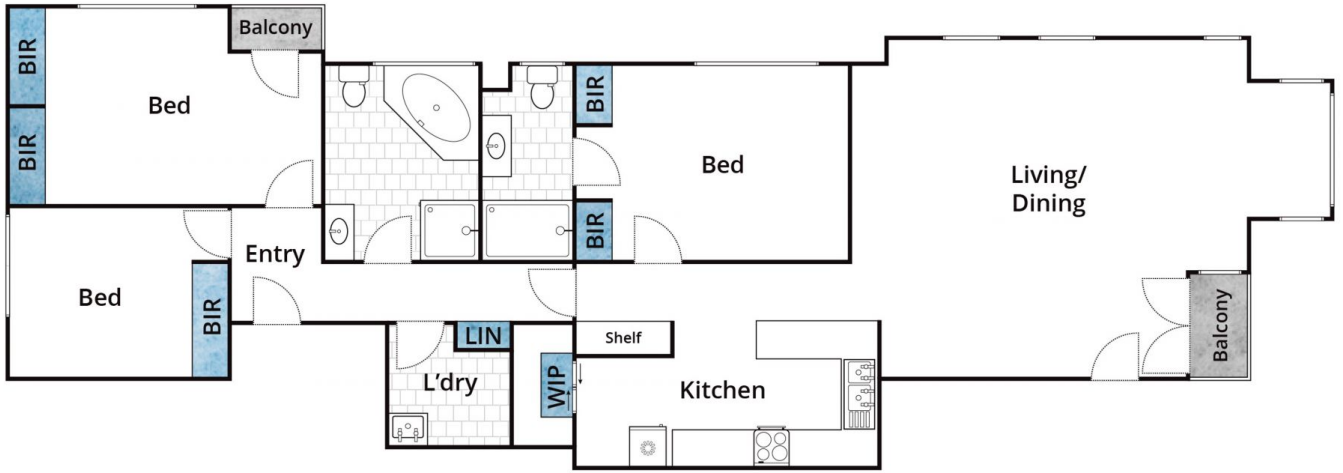
* This top floor apartment offers 3 bedrooms, the main with ensuite. Brilliant north/east aspect provides an abundance of natural light, the sun-drenched living room includes a delightful bay window on the eastern side with views to Rocky Hill and there is a private balcony which is a perfect

Type : Unit
Price : \$ 595,000
Land Size : 144 sqm
View : <https://www.goulburnrealestate.com.au/sale/nsw/southern-tablelands/goulburn/residential/unit/7207303>



Barry McEntee
02 4822 8711

[For full version visit the website](https://www.goulburnrealestate.com.au)



Whilst bwrn.com.au has made every attempt to ensure the accuracy of the floor plan contained here, measurements are approximate and no responsibility is taken for any error, omission, or mis-statement. This plan is for illustrative purposes only.

3/22 Church Street, Goulburn