



28 Mayor Street Goulburn NSW

3 2 1

* Set in a quiet location, just metres from the Victoria Park Precinct which includes the Adventure Playground, Aquatic Centre Redevelopment and the Hospital Redevelopment lies this charming, character home

* 3 Large bedrooms with ensuite to the main. An updated family bathroom with walk-in shower and separate bath. Perfect configuration for downsizers, first home buyers and investors alike

* Open plan living, dining and kitchen area - the latter offers plenty of storage and work space. European laundry is convenient and hidden away

* A fantastic covered outdoor entertaining area doubles as a usable day to day with a reverse cycle air conditioner and alfresco blinds

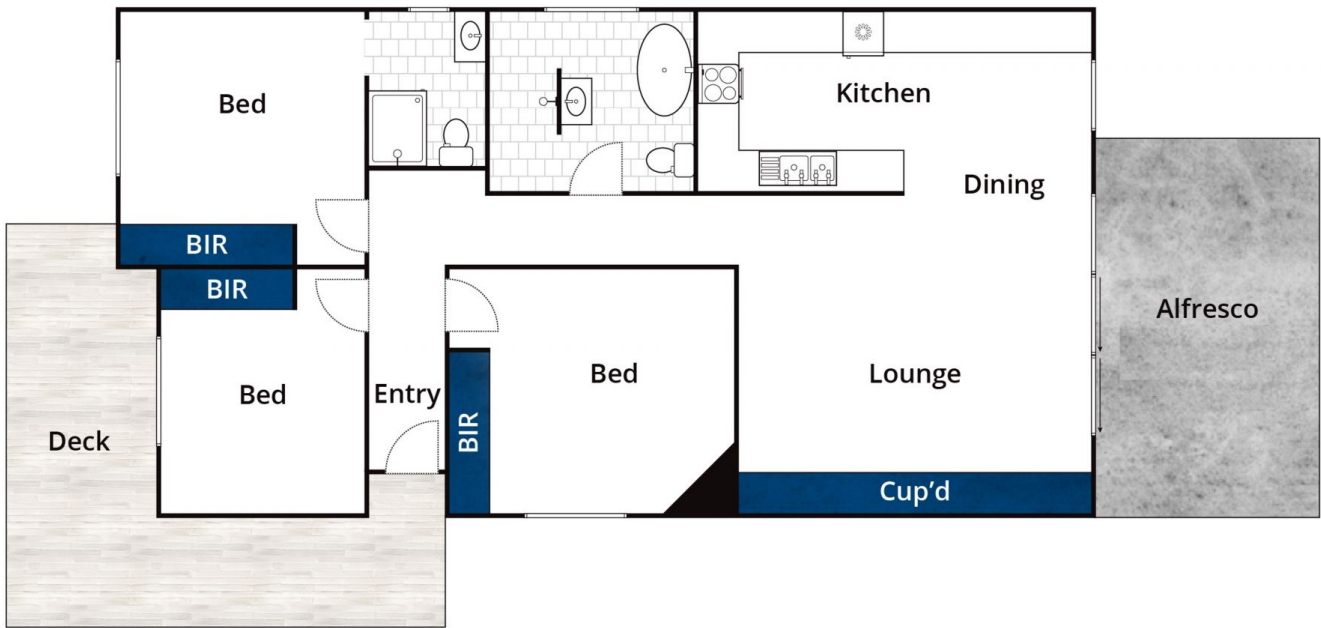
* Side lane access with off-street parking in the form of a

Type : House
Price : \$ 650,000
Land Size : 411 sqm
View : <https://www.goulburnrealestate.com.au/sale/nsw/southern-tablelands/goulburn/residential/house/7030514>



Brody Willis
02 4822 8711

[For full version visit the website](https://www.goulburnrealestate.com.au)



Whilst bwrn.com.au has made every attempt to ensure the accuracy of the floor plan contained here, measurements are approximate and no responsibility is taken for any error, omission, or mis-statement. This plan is for illustrative purposes only.

28 Mayor Street, Goulburn

 **firstnational**
REAL ESTATE
Goulburn