



42 Lansdowne Street Goulburn NSW

2 1 1

* Charming character cottage set on the high side of the road - fantastic 790m2 block, no easements or sewer main so plenty of room to value add to the site with sheds or perhaps a dual occupancy or subdivision - subject to council approval

* Flexible floorplan can offer up to 3 bedrooms however the current format provides 2 large bedrooms and 2 separate living rooms

* The bathroom and kitchen have both been upgraded previously and are in excellent condition, in fact the home is absolutely immaculate throughout

* Plenty of side access to a lock-up garage and excellent climate control with a wood fire plus air conditioning

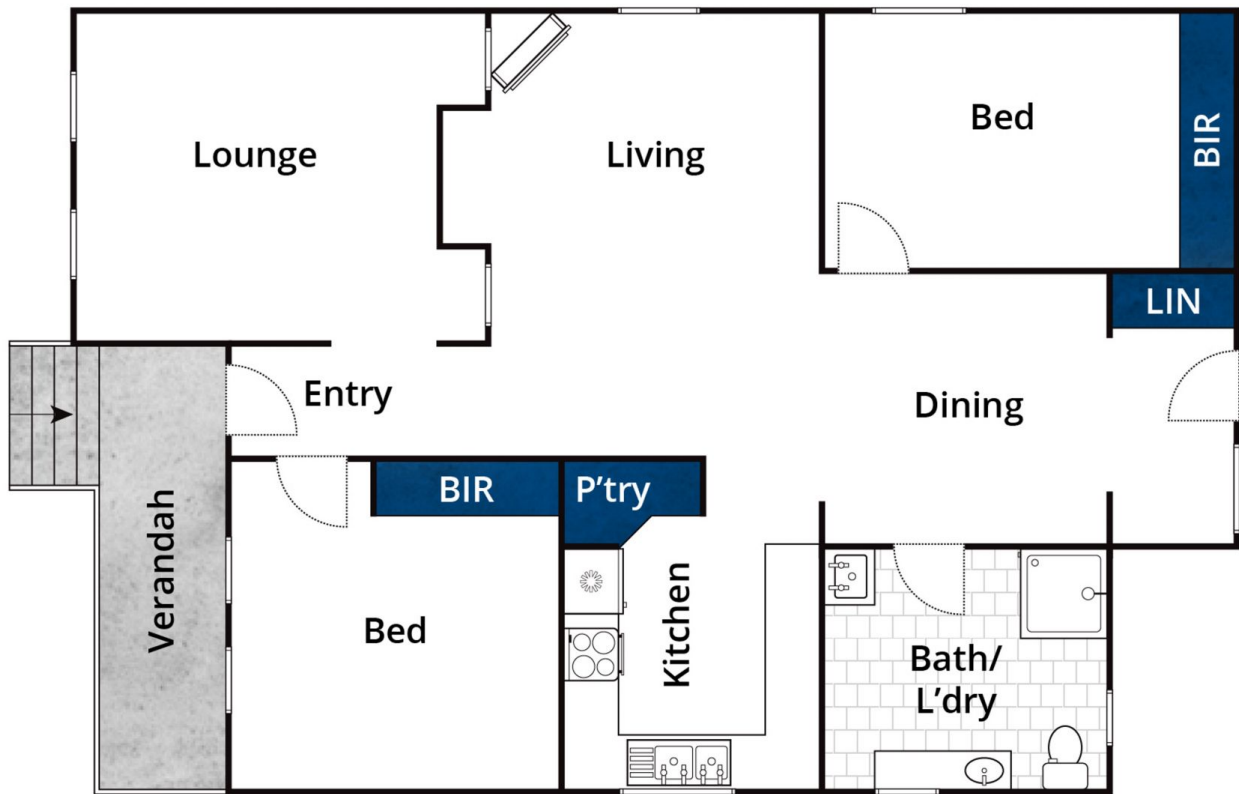
* The property provides an excellent location, close to the CBD combined with a great block of land and a really

Type : House
Price : \$ 525,000
Land Size : 790.4 sqm
View : <https://www.goulburnrealestate.com.au/sale/nsw/southern-tablelands/goulburn/residential/house/6992792>



Barry McEntee
02 4822 8711

[For full version visit the website](https://www.goulburnrealestate.com.au)



Whilst bwrn.com.au has made every attempt to ensure the accuracy of the floor plan contained here, measurements are approximate and no responsibility is taken for any error, omission, or mis-statement. This plan is for illustrative purposes only.

42 Lansdowne Street, Goulburn