



**78 Victoria Street Goulburn NSW**

4 2 2

\* Hidden away behind the private picket fence is this deceptively large home. Filled with character features throughout, it's located a short distance from Schools, the CBD and a 2 minute walk to the Wollondilly Walking Track.

\* With a flexible floorplan that offers 4 genuine bedrooms, the option for a second living space is also available depending on your needs.

\* The near new bathroom is light and bright and the second bathroom gives scope to improve and flexibility to create a possible butlers pantry if desired.

\* A very large living, kitchen and dining space offers modern living with a covered outdoor area adjacent to create a seamless transition to the backyard.

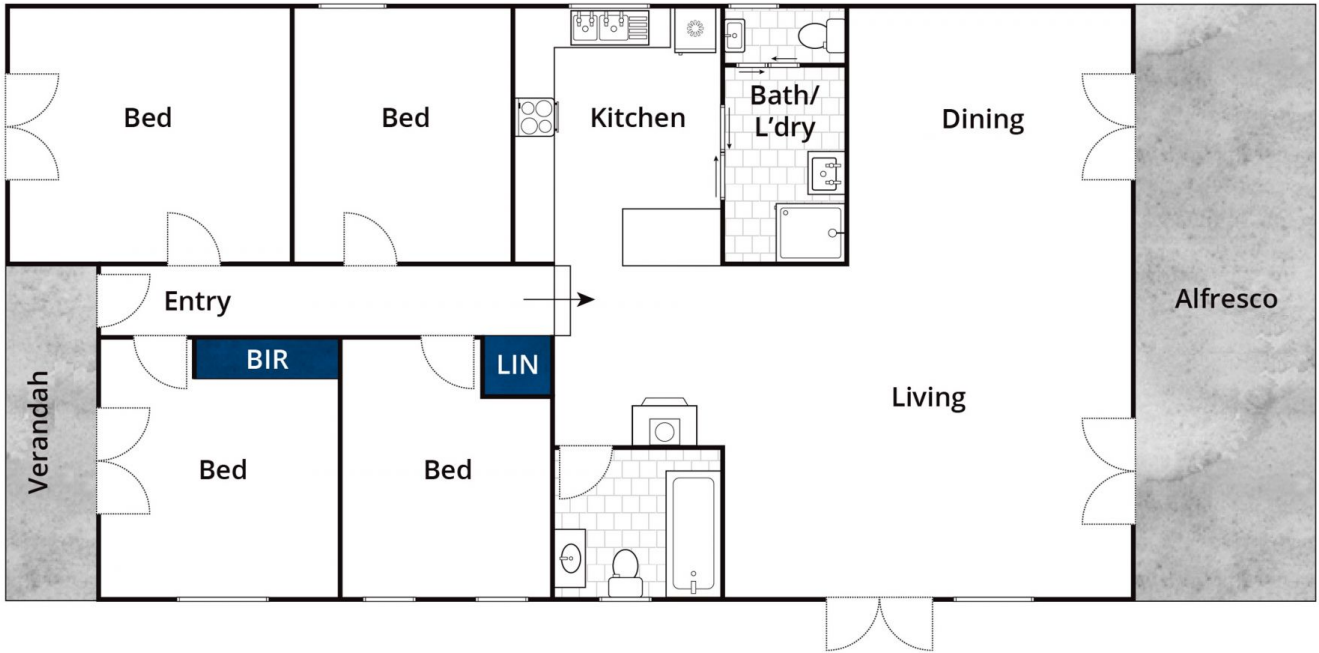
\* Oversize double garage complete with workshop that caters for all storage needs. Plenty of off street parking and

**Type** : House  
**Price** : \$ 640,000  
**Land Size** : 546.8 sqm  
**View** : <https://www.goulburnrealestate.com.au/sale/nsw/southern-tablelands/goulburn/residential/house/6877280>



**Brody Willis**  
02 4822 8711

[For full version visit the website](https://www.goulburnrealestate.com.au)



Whilst [bwrn.com.au](http://bwrn.com.au) has made every attempt to ensure the accuracy of the floor plan contained here, measurements are approximate and no responsibility is taken for any error, omission, or mis-statement. This plan is for illustrative purposes only.

## 78 Victoria Street, Goulburn