






1/22 Church Street Goulburn NSW

2  2  1 

Great location - only a stone's throw from the heart of the CBD in a private and secure strata complex!

Featuring:

- * Two bedrooms with BIRs and carpet - main with ensuite which includes a spa bath, shower, vanity and w.c
- * Huge combined living and dining room with gas heating and high ceilings
- * Kitchen with loads of cupboard space with a walk-in pantry, granite benchtops and top-quality appliances
- * Lock up single garage with remote
- * Close proximity to the main street and all other amenities including Parks, the Hospital and Railway Station within walking distance
- * SORRY NO PETS

Type : Unit

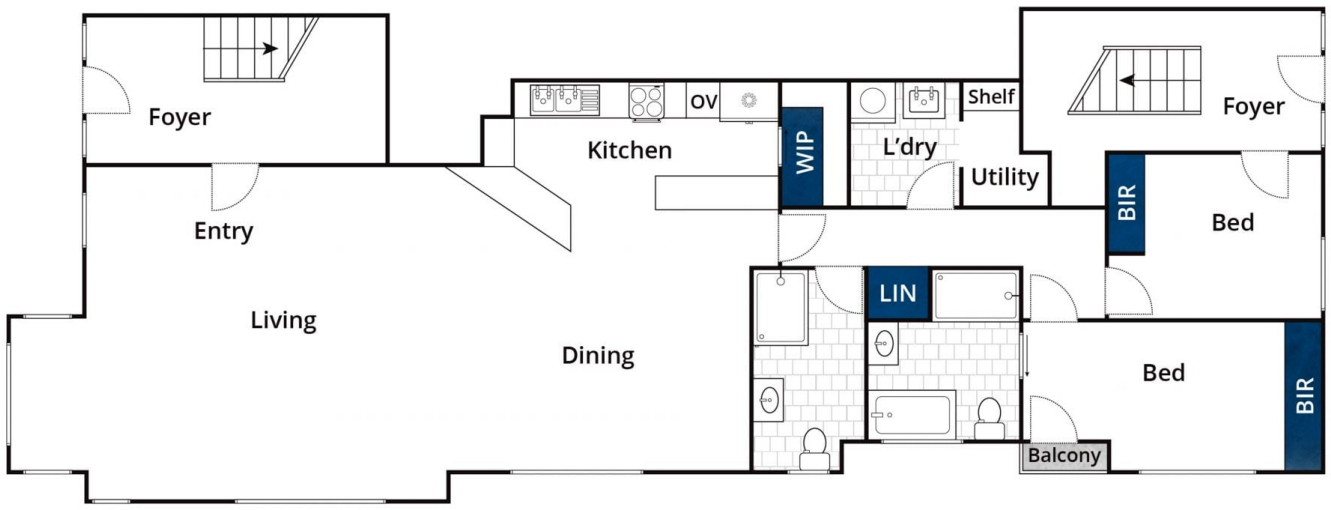
View : <https://www.goulburnrealestate.com.au/lease/nsw/southern-tablelands/goulburn/residential/unit/6828961>



Property Management Leasing Team
02 4822 8711

[For full version visit the website](https://www.goulburnrealestate.com.au)

<https://www.goulburnrealestate.com.au>



Whilst bwrm.com.au has made every attempt to ensure the accuracy of the floor plan contained here, measurements are approximate and no responsibility is taken for any error, omission, or mis-statement. This plan is for illustrative purposes only.

1/22 Church Street, Goulburn