

3 Erith Street Goulburn NSW

3 1 1

* Very quirky 3 bedroom home located right on the doorstep of the CBD and just minutes walk to the new Goulburn Hospital and hugely popular Victoria Park precinct

* Positioned in a quiet, no through road the block has the benefit of rear lane access to a large storage shed and potential vehicle access

* The 2 storey design features soaring cathedral ceilings and a flexible floorplan which can provide a minimum of 3 bedrooms with a possible 4th bedroom or second living area

* The kitchen and bathroom have both been renovated and there is a second toilet in the laundry which is a good size

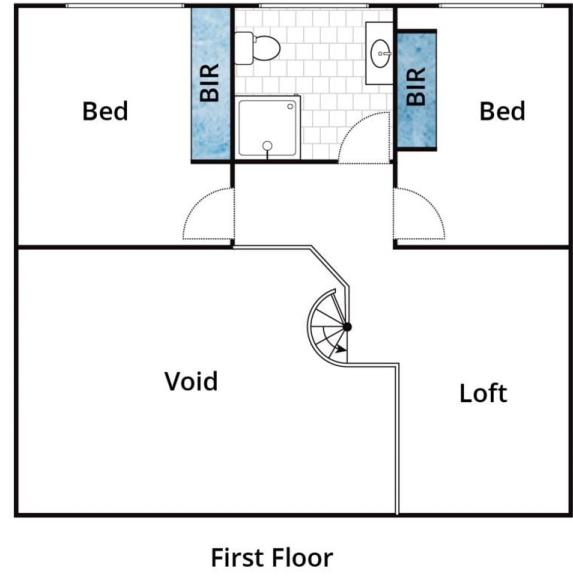
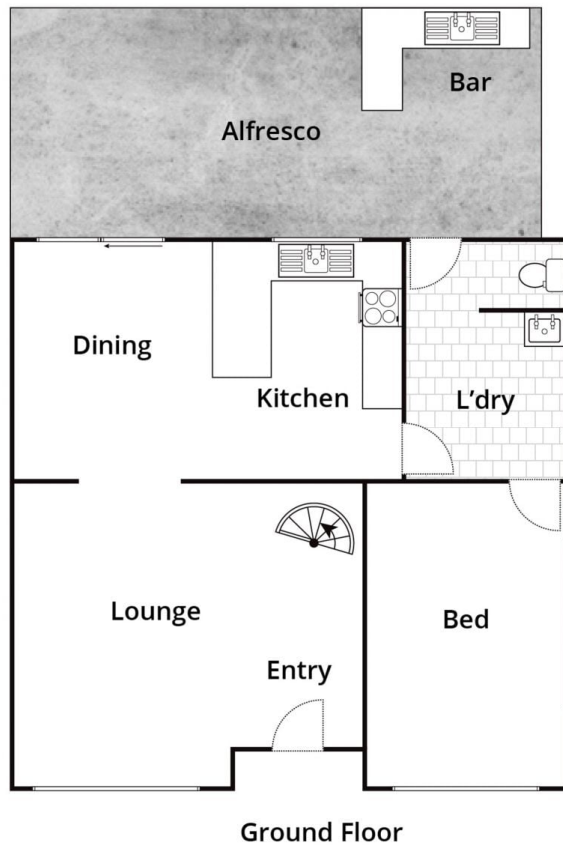
* The north rear aspect makes the kitchen & dining areas light & bright. A fantastic outdoor entertaining and bar area

Type : House
Price : \$ 485,000
Land Size : 358.7 sqm
View : <https://www.goulburnrealestate.com.au/sale/nsw/southern-tablelands/goulburn/residential/house/6785324>



Barry McEntee
02 4822 8711

[For full version visit the website](https://www.goulburnrealestate.com.au)



Whilst bwrn.com.au has made every attempt to ensure the accuracy of the floor plan contained here, measurements are approximate and no responsibility is taken for any error, omission, or mis-statement. This plan is for illustrative purposes only.

3 Erith Street, Goulburn