

**93 Bradley Street Goulburn NSW**

6 2 3

\* Lynburn is a landmark Goulburn residence with a long and rich history which offers the best of both worlds. The grace and charm of a bygone era with modern convenience. Situated in the city's "Blue Ribbon" period home precinct, it has incredible street appeal as well as being set on a 949m<sup>2</sup> parcel of land with lane access to the rear.

\* The flexible floorplan offers traditional formal rooms on the ground floor coupled with a casual living space that looks out to the established and peaceful garden.

\* Upstairs there are 4 bedrooms, 2 of which are enormous, as well as a study and a dressing room. They all enjoy a leafy outlook and have elevated views. The private upstairs deck is the perfect spot to wind down with a wine and watch the world go by.

**Type** : House  
**Land Size** : 948.5 sqm  
**View** : <https://www.goulburnrealestate.com.au/sale/nsw/southern-tablelands/goulburn/residential/house/6780156>

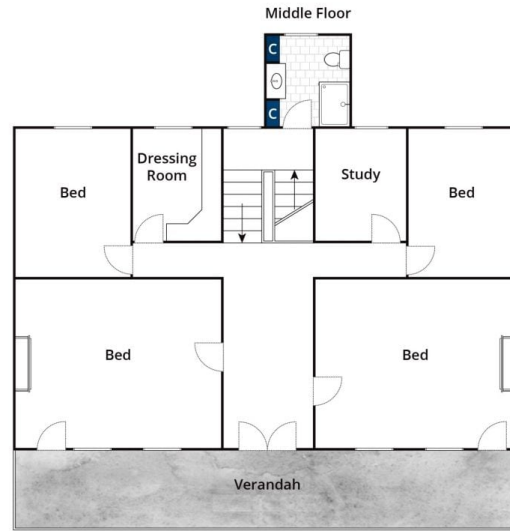


**Brody Willis**  
02 4822 8711

[For full version visit the website](#)



Ground Floor



First Floor

Whilst [bwrn.com.au](http://bwrn.com.au) has made every attempt to ensure the accuracy of the floor plan contained here, measurements are approximate and no responsibility is taken for any error, omission, or mis-statement. This plan is for illustrative purposes only.

## 93 Bradley Street, Goulburn