



26 May Street Goulburn NSW

4 2 2

* Situated on a large 1000m2 block sits a large, family home. With side access and plenty of room for extra sheds as well as a huge backyard for kids and pets.

* With a main bedroom of great size and recently renovated ensuite, the views from the private deck attached to this space look out over the Goulburn township.

* 3 further bedrooms and another recently renovated family bathroom.

* Close to the Goulburn East Public School as well as Golf Course and Wetlands. Just a few minutes' drive into the CBD.

* 2 separate living spaces and another covered deck area that overlooks the yard.

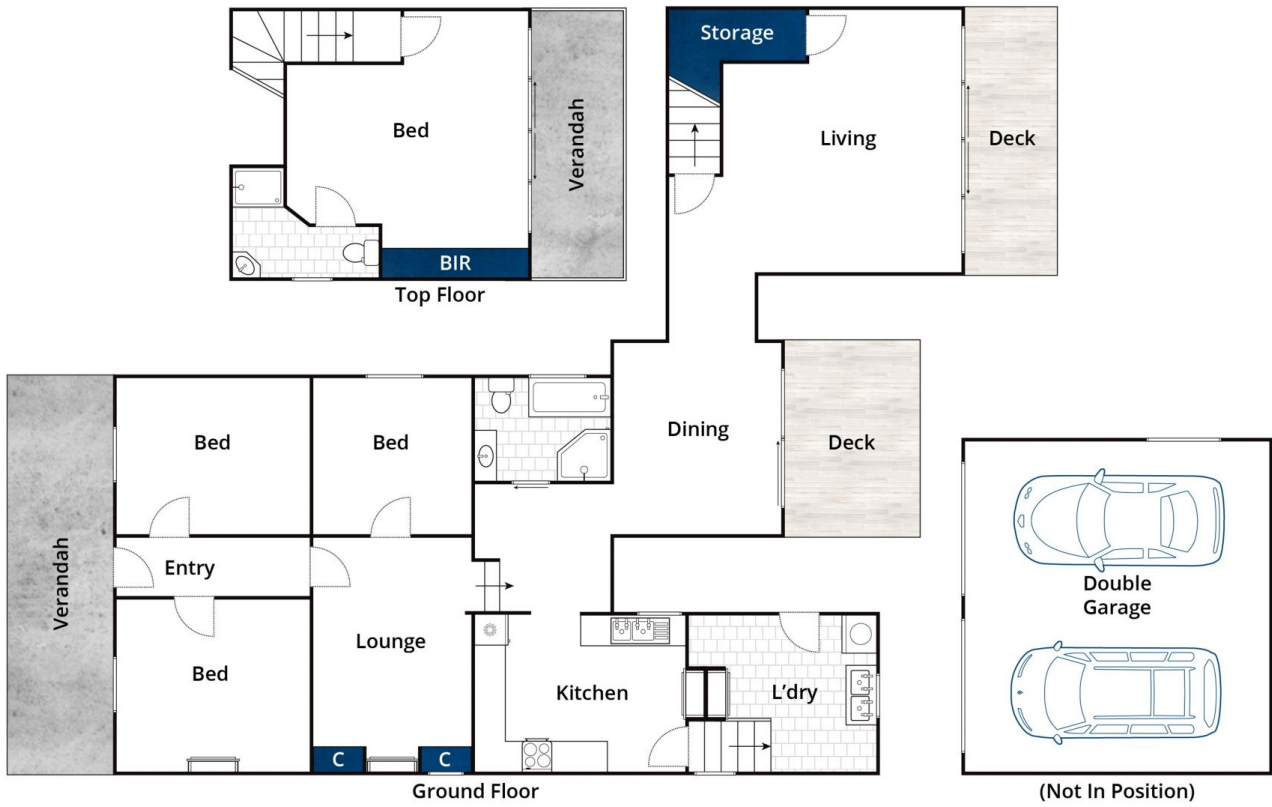
* A property that is sure to tick a lot of boxes, get in touch to inspect today.

Type : House
Price : \$ 575,000
Land Size : 1012 sqm
View : <https://www.goulburnrealestate.com.au/sale/nsw/southern-tablelands/goulburn/residential/house/6736068>

[For full version visit the website](https://www.goulburnrealestate.com.au)



Brody Willis
02 4822 8711



Whilst bwrn.com.au has made every attempt to ensure the accuracy of the floor plan contained here, measurements are approximate and no responsibility is taken for any error, omission, or mis-statement. This plan is for illustrative purposes only.

26 May Street, Goulburn