



**13 Hume Street Goulburn NSW**

3 1 1

- \* 3 Bedroom, full brick house located close to the Canberra exit and just a couple of minutes away from the CBD
- \* Large living and dining spaces with a north aspect and gas heater
- \* Single garage of brick construction and plenty of off street parking
- \* With scope to improve to your liking, this home represents great value for first home buyers and investors alike.

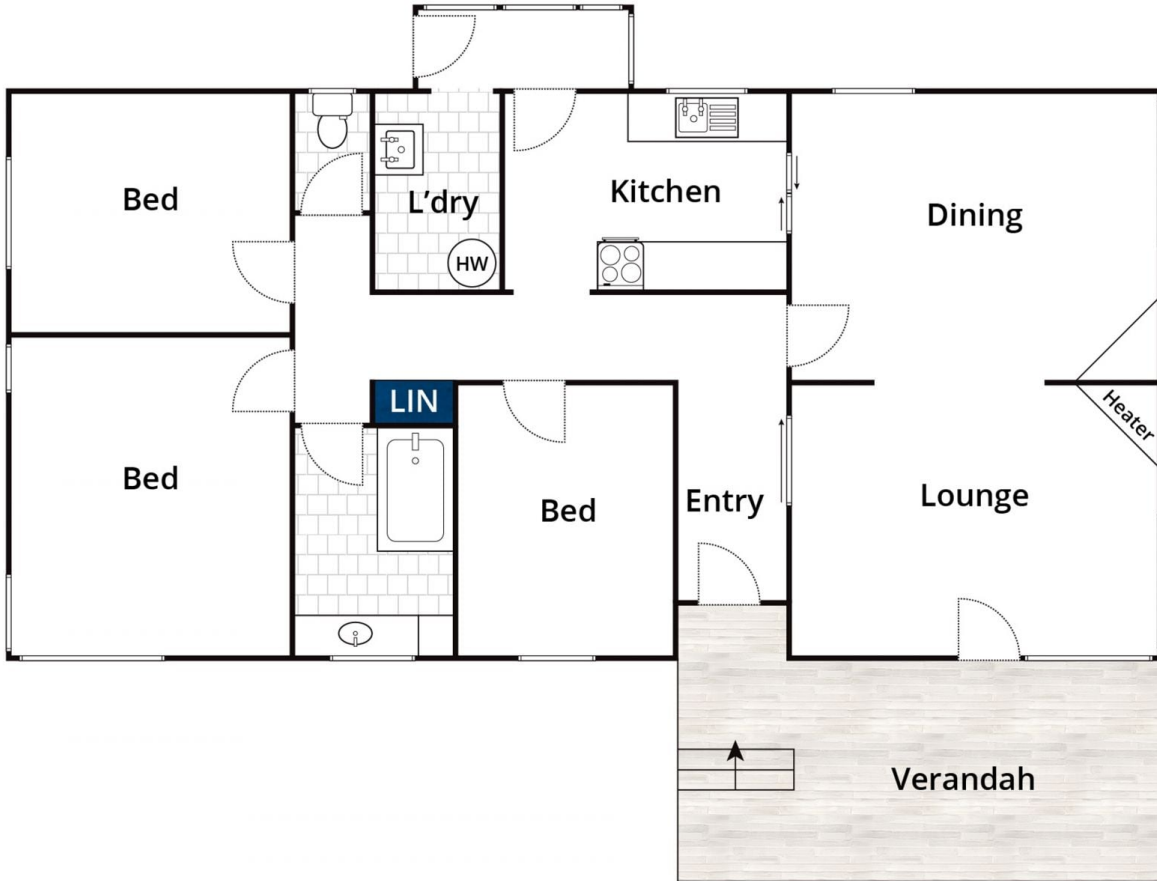
**Type** : House  
**Price** : \$ 440,000  
**Land Size** : 569 sqm  
**View** : <https://www.goulburnrealestate.com.au/sale/nsw/southern-tablelands/goulburn/residential/house/6718322>

Land Rates - \$1396 pa  
 Water Rates - \$967 pa + usage  
 Rental Appraisal: \$330 per week approx

[For full version visit the website](https://www.goulburnrealestate.com.au)



**Brody Willis**  
02 4822 8711



Approx House Area 105m<sup>2</sup>

Whilst [bwrn.com.au](http://bwrn.com.au) has made every attempt to ensure the accuracy of the floor plan contained here, measurements are approximate and no responsibility is taken for any error, omission, or mis-statement. This plan is for illustrative purposes only.

**13 Hume Street, Goulburn**

**firstnational**  
REAL ESTATE  
Goulburn