



72 Joshua Street Goulburn NSW

3 2 2

* Located close to schools, Post Office, shops, Wollondilly Walking Track and Golf Course is this 3 bedroom, 2 bathroom home

* Good size bedrooms all with built in wardrobes and ornate ceilings

* Side access to the back yard which houses a double garage plus workshop and offers the added benefit of rear lane access. Plenty of off-street parking for trailers and even a caravan if needed

* Flexible floor plan allows for a 4 bedroom set up if needed, otherwise 2nd living space/home office

* 2 bathrooms with the flexibility of both a bath and walk in shower

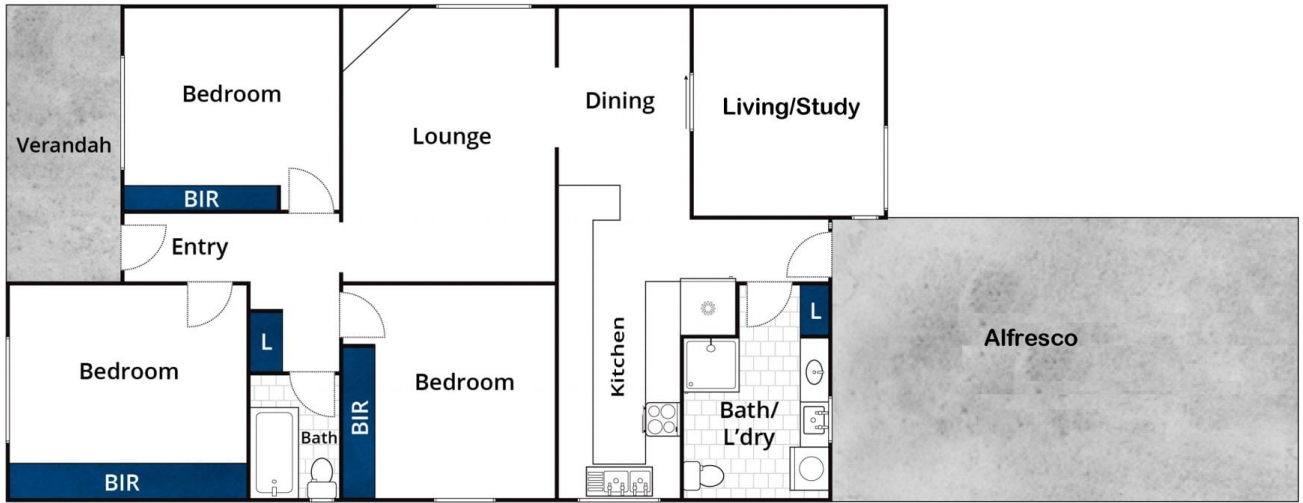
* Galley kitchen with an abundance of storage and work space

Type : House
Price : \$ 570,000
Land Size : 537.5 sqm
View : <https://www.goulburnrealestate.com.au/sale/nsw/southern-tablelands/goulburn/residential/house/6700346>



Brody Willis
02 4822 8711

[For full version visit the website](https://www.goulburnrealestate.com.au)



Approx House Area 114m²

Whilst bwrn.com.au has made every attempt to ensure the accuracy of the floor plan contained here, measurements are approximate and no responsibility is taken for any error, omission, or mis-statement. This plan is for illustrative purposes only.

72 Joshua Street, Goulburn