



75 Mewburn Drive Goulburn NSW

3 2 1

* As new, immaculately presented three bedroom semi-detached home in the sought after Belmore Estate, just a stone's throw to the Wollondilly River Walk

* A perfect home for low maintenance buyers including young families, owner occupiers downsizing or set and forget investors

* Spacious master bedroom with ensuite plus walk in robe, BIW's to the other 2 bedrooms

* Boasting plenty of natural light, open plan living and dining + built-in study nook

* Warm in winter and cool in summer with ducted heating and evaporative cooling

* Large alfresco entertaining area with extended deck and sunny north aspect

* Easy care and established backyard oasis. Garden shed

Type : Semi Detached

Price : \$ 649,000

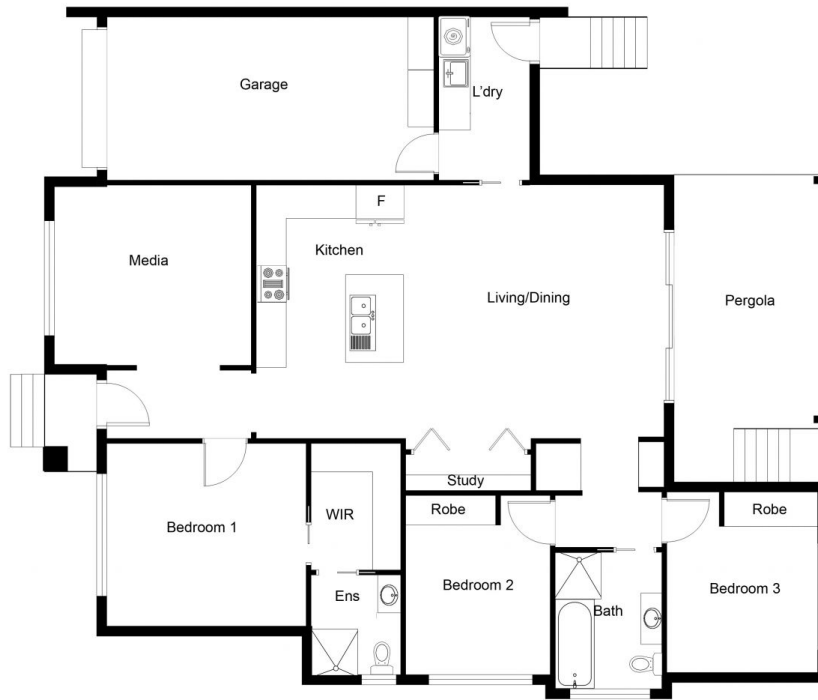
Land Size : 375 sqm

View : <https://www.goulburnrealestate.com.au/sale/nsw/southern-tablelands/goulburn/residential/semi-detached/6700335>



Barry McEntee
02 4822 8711

[For full version visit the website](https://www.goulburnrealestate.com.au)



FLOOR PLAN

This floor plan including furniture, fixture measurements and dimensions are approximate and for illustrative purposes only.
BoxBrownie.com gives no guarantee, warranty or representation as to the accuracy and layout.
All enquiries must be directed to the agent, vendor or party representing this floor plan.

75 Mewburn Drive