



22 Chisholm Street Goulburn NSW

3  1  1 

- * 3 bedroom home located on a quiet street
- * Close to the Canberra exit while still only minutes from the CBD.
- * Wood fire and reverse cycle AC
- * Great access to the backyard and a single garage
- * Not often does a home come along that offers so much potential.
- * Ideal property for first home buyers wanting to add value and get on the property ladder
- * Expected Rental Return \$310-\$350 per week

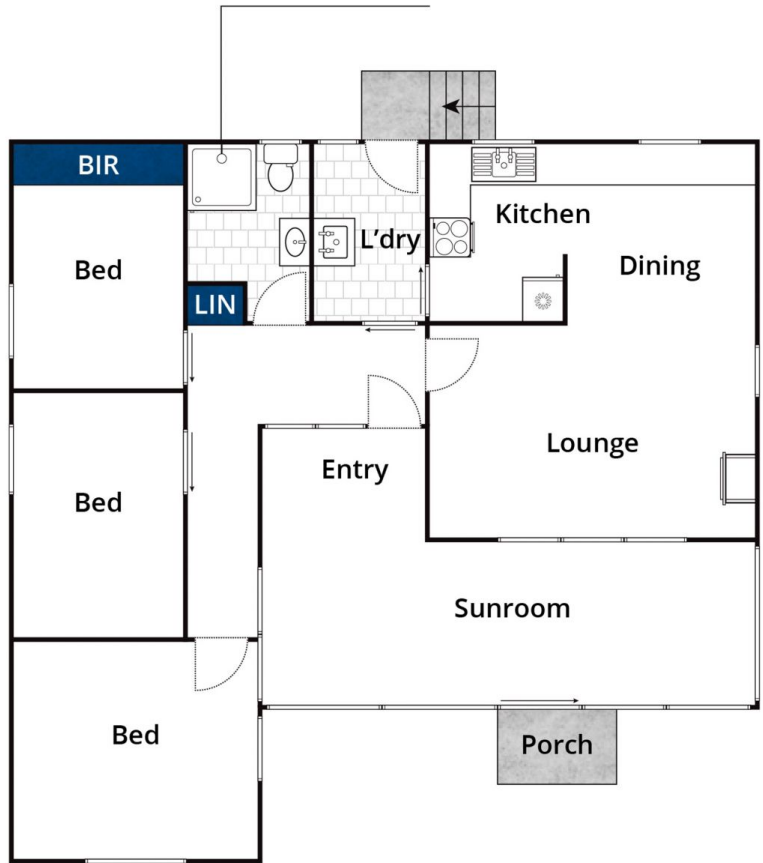
Type : House
Price : \$ 411,000
Land Size : 634 sqm
View : <https://www.goulburnrealestate.com.au/sale/nsw/southern-tablelands/goulburn/residential/house/6682831>

Land Rates - \$1430.56 pa
Water Rates - \$967 pa + usage

[For full version visit the website](https://www.goulburnrealestate.com.au)



Glenn Power
02 4822 8711



Whilst bwrn.com.au has made every attempt to ensure the accuracy of the floor plan contained here, measurements are approximate and no responsibility is taken for any error, omission, or mis-statement. This plan is for illustrative purposes only.

22 Chisholm Street, Goulburn