

10 Rex Street Goulburn NSW

4 🛏 3 🚿 2 🚗

* Landmark property unlike no other in an established area. Designed with a Georgian influence, there is nothing to do but move in, sit back and enjoy. Located close to schools, shops and the Wollondilly Walking Track.

* Main bedroom with a walk in wardrobe and ensuite as well as an east facing Juliet balcony - the perfect place for the morning coffee.

* 3 further bedrooms, with built in wardrobes. A stand alone study/office for people that have the ability to work from home. The house is climate controlled with ducted heating and cooling throughout.

* Formal living room as well as an open plan living, dining and kitchen space. Kitchen has high quality appliances and plenty of workspace complete with walk in pantry.

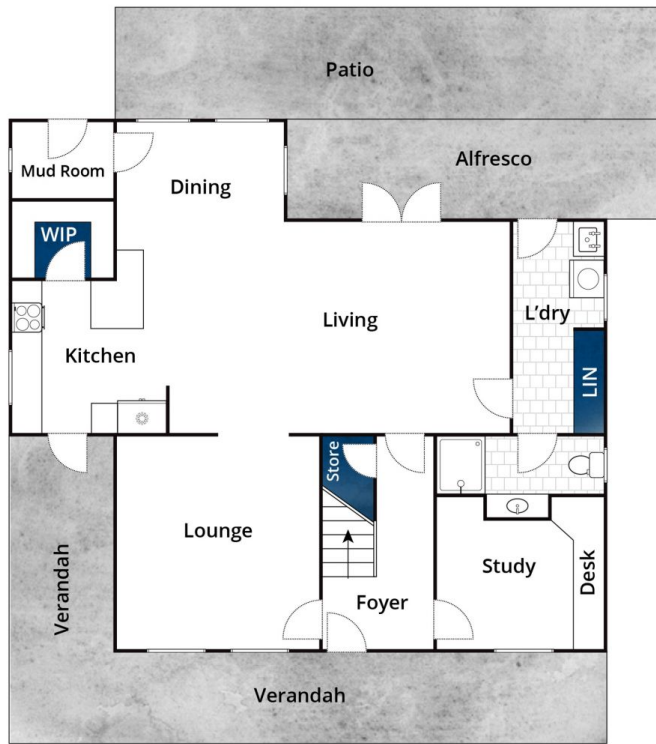
* Auto gate entry to the property from the street provides

Type : House
Price : \$ 749,000
Land Size : 483.8 sqm
View : <https://www.goulburnrealestate.com.au/sale/nsw/southern-tablelands/goulburn/residential/house/6670437>

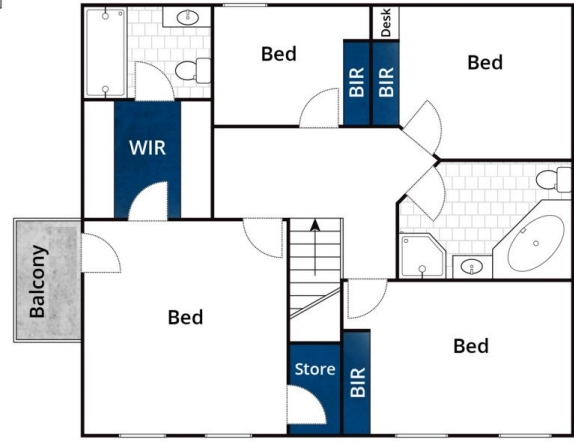


Brody Willis
02 4822 8711

[For full version visit the website](https://www.goulburnrealestate.com.au)



Ground Floor



First Floor

Whilst bwrn.com.au has made every attempt to ensure the accuracy of the floor plan contained here, measurements are approximate and no responsibility is taken for any error, omission, or mis-statement. This plan is for illustrative purposes only.

10 Rex Street, Goulburn

