



11 Llewellyn Avenue Goulburn NSW

4 2 1

* A delightful family home located in one of Goulburn's most sought-after locations. A quiet, tree-lined street within easy walking distance to Victoria Park, Goulburn Base Hospital and the CBD

* The property has tremendous street appeal and is quiet deceiving in size. Behind the mild-mannered exterior lies 4 bedrooms, 2 bathrooms (including ensuite to main bedroom) and a spacious sunken lounge room

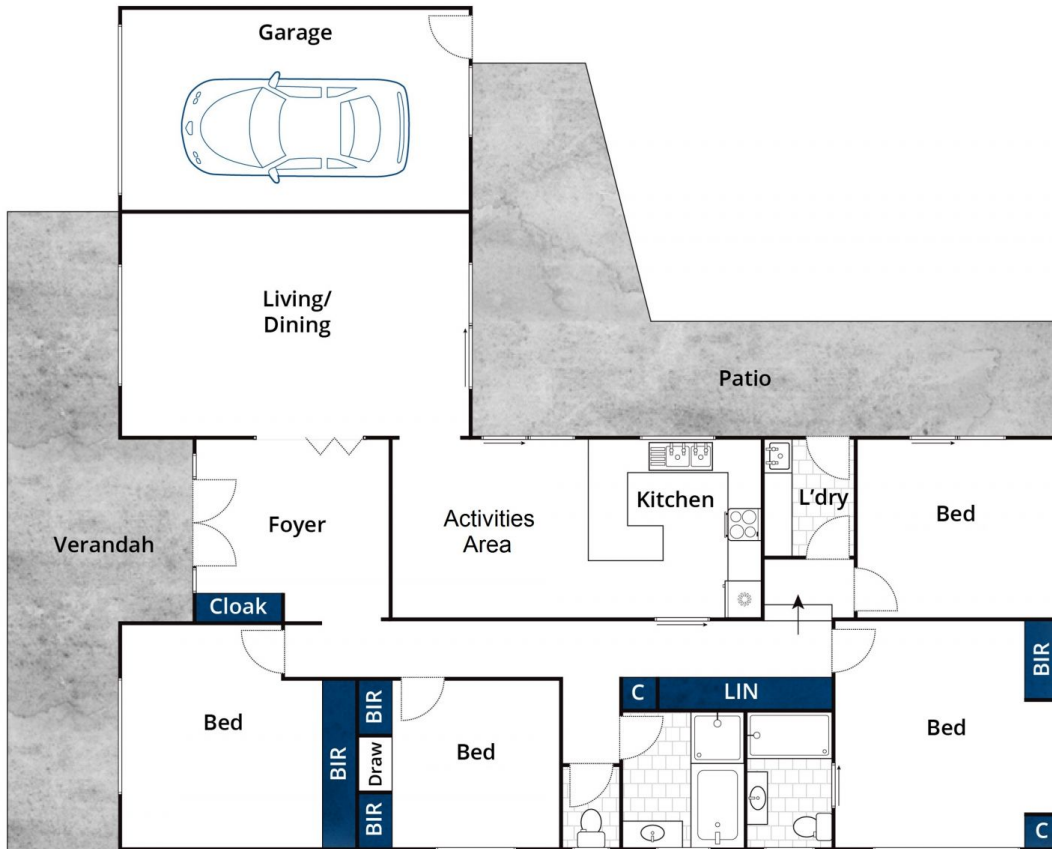
* The upgraded kitchen enjoys plenty of natural light thanks to the sunny north aspect as does the adjoining activities room which steps straight out to an outdoor patio overlooking the private rear garden

* Complete with near new ducted gas heating system and an oversized garage this charming home is sure to impress

Type : House
Price : \$ 690,000
Land Size : 590.9 sqm
View : <https://www.goulburnrealestate.com.au/sale/nsw/southern-tablelands/goulburn/residential/house/6655430>



Barry McEntee
02 4822 8711



Whilst bwrn.com.au has made every attempt to ensure the accuracy of the floor plan contained here, measurements are approximate and no responsibility is taken for any error, omission, or mis-statement. This plan is for illustrative purposes only.

11 Llewellyn Avenue, Goulburn