



**40 Churchill Street Goulburn NSW**

**3**  **1** 

- \* Set and forget investment located close the Canberra exit as well as schools.
- \* 3 bedroom property with separate dining and lounge rooms.
- \* Well fenced and low maintenance yard with side access.
- \* Currently tenanted until February 2023 paying \$340 per week.
- \* Updated kitchen with gas cooking and plenty of storage space.
- \* Modern and practical bathroom.

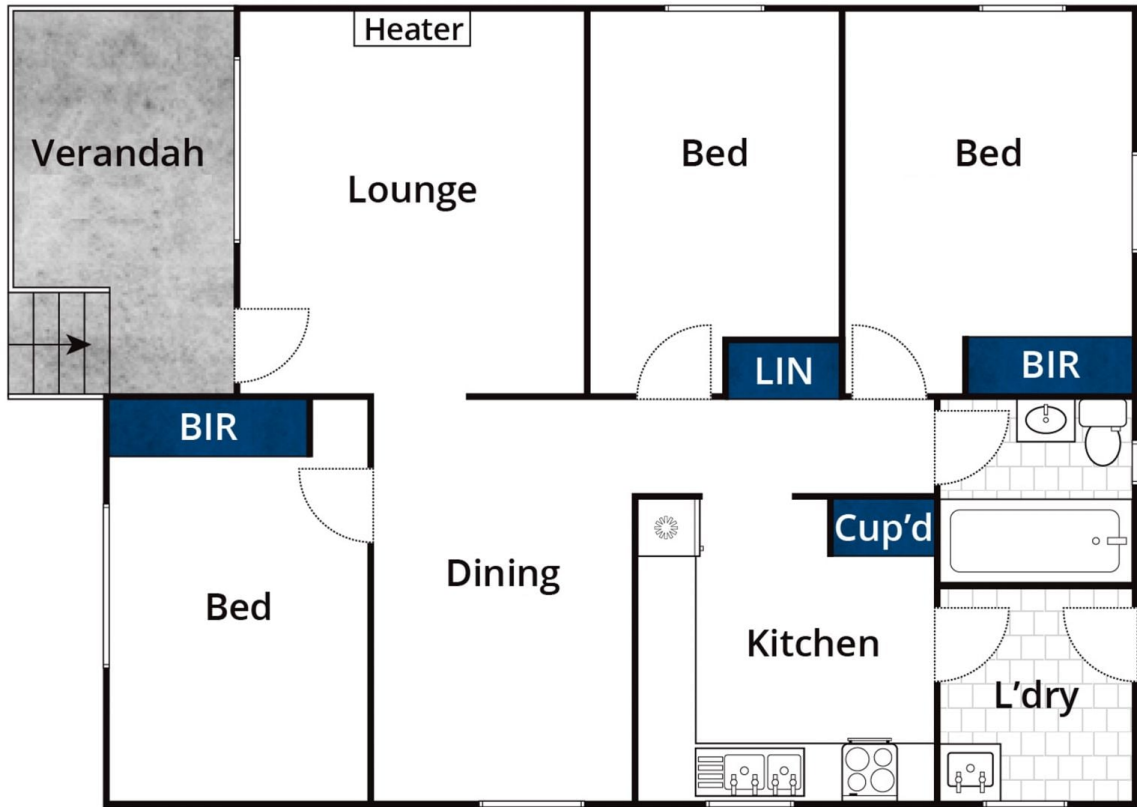
**Type** : House  
**Price** : \$ 433,000  
**Land Size** : 600.7 sqm  
**View** : <https://www.goulburnrealestate.com.au/sale/nsw/southern-tablelands/goulburn/residential/house/6610906>

It's business as usual for our team at Goulburn First National. We are adhering to all directions from State and

[For full version visit the website](https://www.goulburnrealestate.com.au)



**Brody Willis**  
**02 4822 8711**



Whilst [bwrm.com.au](http://bwrm.com.au) has made every attempt to ensure the accuracy of the floor plan contained here, measurements are approximate and no responsibility is taken for any error, omission, or mis-statement. This plan is for illustrative purposes only.

## 40 Churchill Street, Goulburn