



**87 Hume Street Goulburn NSW**

**3**  **1** 

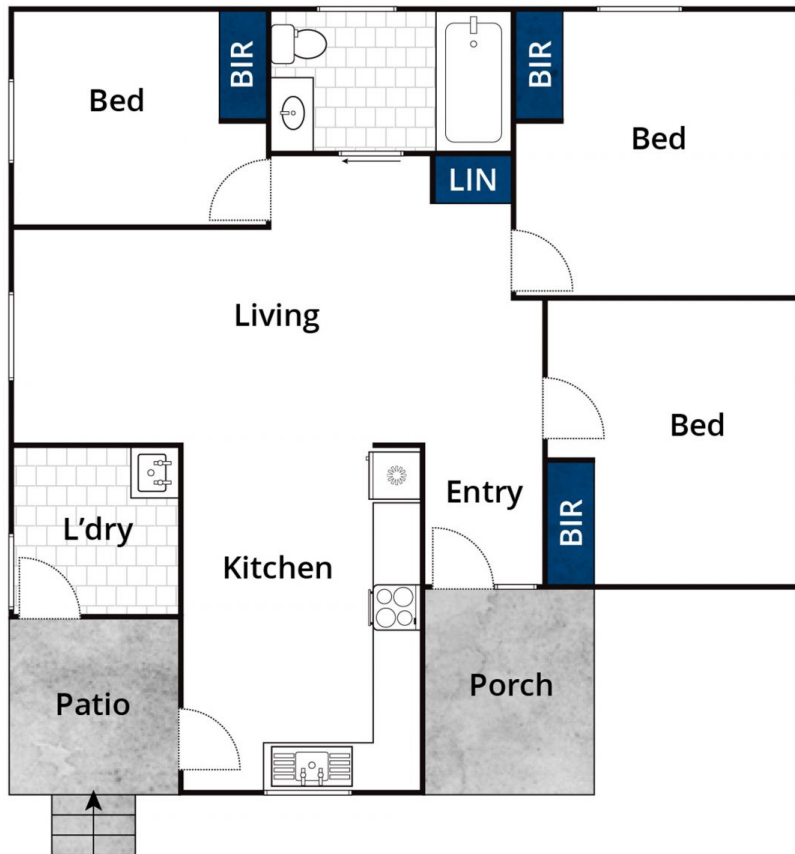
- \* Neat and tidy 3 bedroom home located close to the Canberra exit as well as being a couple of minutes drive into the CBD.
- \* All bedrooms have built in wardrobes. Family bathroom
- \* Open plan kitchen, dining and living space with the scope to improve.
- \* Huge backyard with side access leaves plenty of room for sheds and an outdoor entertaining space.
- \* Reverse cycle split system. All external walls and internal walls are insulated making this a very comfortable home during the warmer and cooler months.
- \* A suitable home for the first home buyers who are looking to value add or investors who are after affordability

**Type** : House  
**Price** : \$ 419,000  
**Land Size** : 733.5 sqm  
**View** : <https://www.goulburnrealestate.com.au/sale/nsw/southern-tablelands/goulburn/residential/house/6593420>



**Brody Willis**  
**02 4822 8711**

[For full version visit the website](https://www.goulburnrealestate.com.au)



Approx House Area 82m<sup>2</sup>

Whilst [bwrn.com.au](http://bwrn.com.au) has made every attempt to ensure the accuracy of the floor plan contained here, measurements are approximate and no responsibility is taken for any error, omission, or mis-statement. This plan is for illustrative purposes only.

**87 Hume Street, Goulburn**