



4/106 Joshua Street Goulburn NSW

3 1 1

* Located a stones throw from the Wollondilly River and associated walkways is this truly rare offering. Designed to maximise the northern aspect, it harnesses an incredible amount of natural light as well as uninterrupted views.

* New kitchen which connects seamlessly to the dining and living space which has a cosy wood fire as well as 3 split system air conditioners throughout.

* 3rd bedroom/studio/office is detached from the main house & is located above the garage. Great for someone working from home or as guest accommodation.

* A Juliet balcony off the main bedroom is the perfect place for the morning coffee and a space to disconnect from the manic day to day lifestyle.

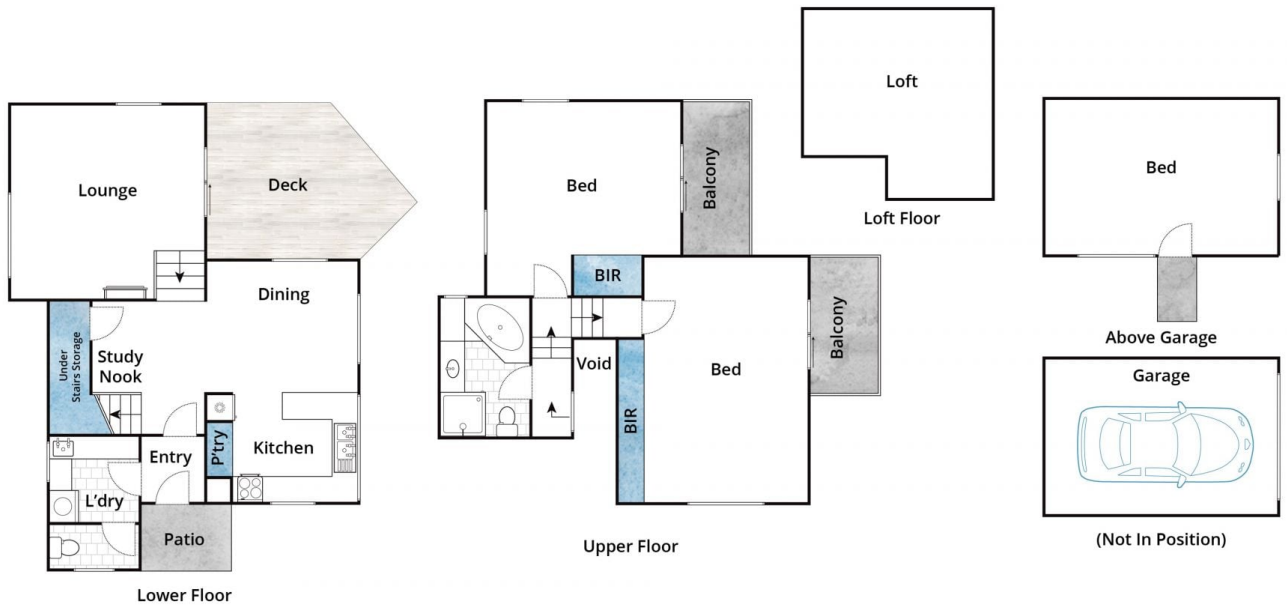
* Main bathroom with large corner bath and separate shower as well as 2 toilets.

Type : House
Price : \$ 590,000
Land Size : 573 sqm
View : <https://www.goulburnrealestate.com.au/sale/nsw/southern-tablelands/goulburn/residential/house/6591016>

[For full version visit the website](https://www.goulburnrealestate.com.au)



Brody Willis
02 4822 8711



Approx. Area 111m²

Whilst bwrn.com.au has made every attempt to ensure the accuracy of the floor plan contained here, measurements are approximate and no responsibility is taken for any error, omission, or mis-statement. This plan is for illustrative purposes only.

4/106 Joshua Street, Goulburn