



**8 Ben Bullen Place Goulburn NSW**

3 2 4

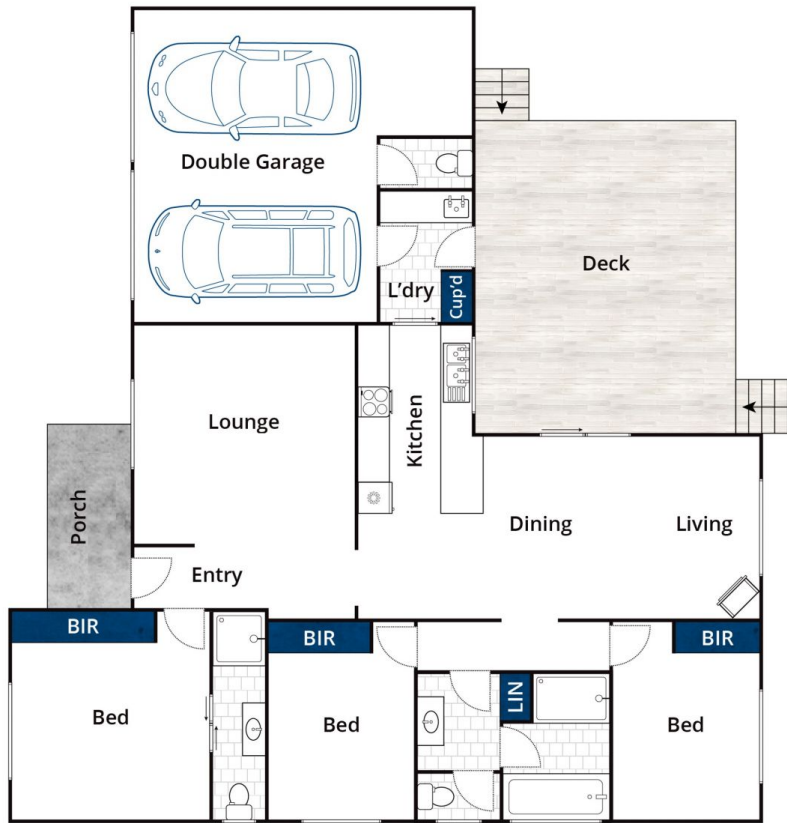
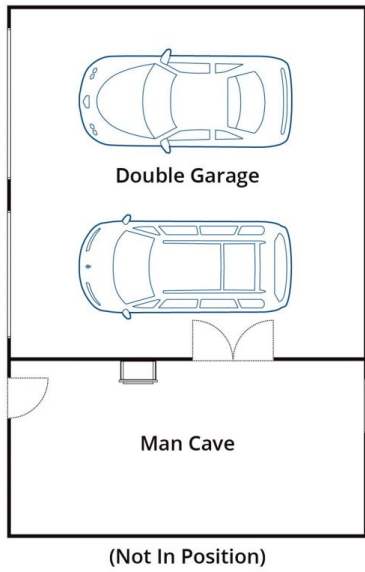
- \* Good quality brick veneer home built by a well known & respected local builder
- \* Comfortable family living with 3 bedrooms, 2.5 bathrooms and 2 living areas
- \* Built-in wardrobes to all bedrooms. Modern kitchen with dishwasher
- \* The home is well insulated and has a real look gas log fire to keep you warm in Winter
- \* Huge entertaining deck at the rear with expansive views to Rocky Hill
- \* Attached double garage with remote entry and internal access to the home
- \* Separate colourbond workshop with 2 bays for vehicle access, workshop and quite possibly the best man cave in Goulburn complete with wood heater

**Type** : House  
**Price** : \$ 627,000  
**Land Size** : 1049 sqm  
**View** : <https://www.goulburnrealestate.com.au/sale/nsw/southern-tablelands/goulburn/residential/house/6436735>



**Barry McEntee**  
02 4822 8711

[For full version visit the website](https://www.goulburnrealestate.com.au)



Approx House Area 153m<sup>2</sup>

Whilst [bwrn.com.au](http://bwrn.com.au) has made every attempt to ensure the accuracy of the floor plan contained here, measurements are approximate and no responsibility is taken for any error, omission, or mis-statement. This plan is for illustrative purposes only.

## 8 Ben Bullen Place, Goulburn