



41 Platypus Circuit Goulburn NSW

4 2 2

* Stunning family home incorporating the best aspects of Hamptons Style architecture with a Modern Country influence

* Brilliantly located in the popular "Platypus Banks" precinct the home is set on a parklike 2000m2 block which backs onto a large rural property - genuine country living with the Wollondilly River within easy walking distance

* Solar passive design featuring high ceilings and an abundance of natural light with spacious open plan living

* Gorgeous kitchen which is complimented by an oversized butler's pantry, massive laundry & mud room which combine to add practicality to the striking hub of the home

* The bedrooms are all very generous in size. The main suite is a particularly good size with a large walk-in robe and the ensuite features a double shower & double vanity

Type : House
Price : \$ 929,000
Land Size : 2010 sqm
View : <https://www.goulburnrealestate.com.au/sale/nsw/southern-tablelands/goulburn/residential/house/6366310>

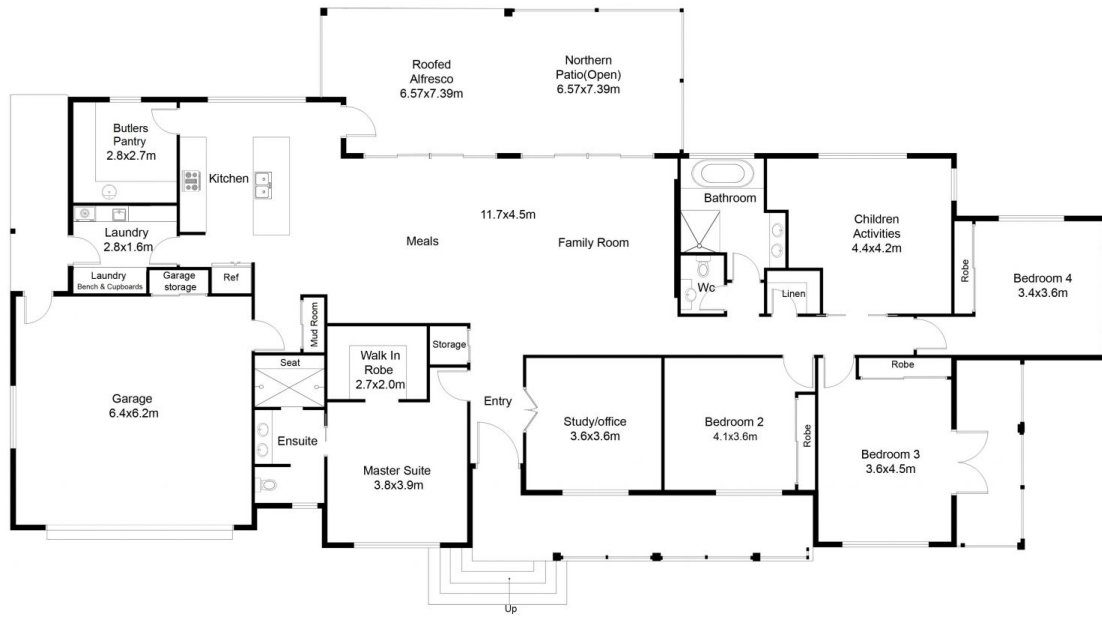
[For full version visit the website](https://www.goulburnrealestate.com.au)



Barry McEntee
02 4822 8711



Brody Willis
02 4822 8711



FLOOR PLAN

This floor plan including furniture, fixture measurements and dimensions are approximate and for illustrative purposes only. Boxbrownie.com gives no guarantee, warranty or representation as to the accuracy and layout. All enquiries must be directed to the agent, vendor or party representing this floor plan.

41 Platypus Circuit, Goulburn