



2-6 Wilmot Street Goulburn NSW

6 3 1

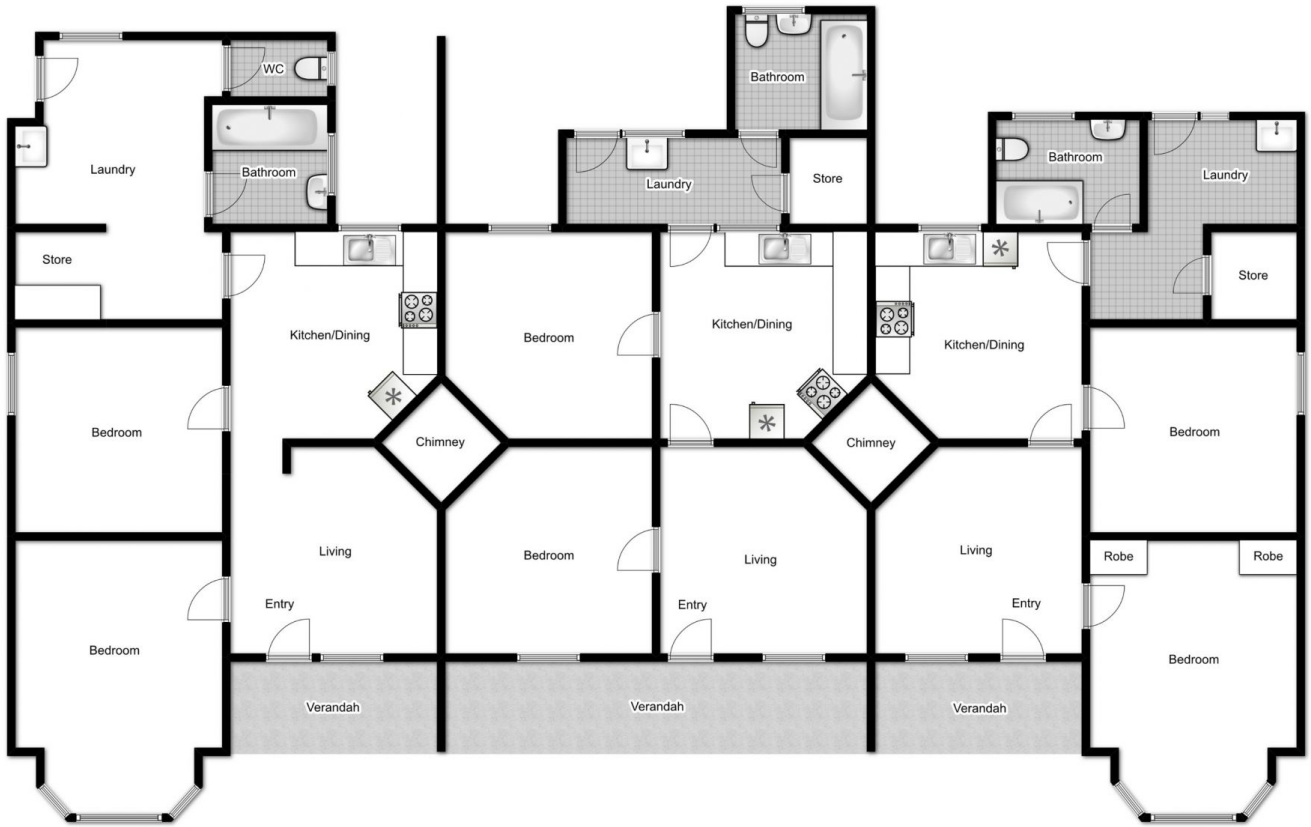
- * 3 x 2 bedroom single level terraces with current leases in place to A Grade tenants - gross annual rent approx. \$41,000 representing 5.4% gross return
- * Each unit has been upgraded including new kitchens and bathrooms
- * Victorian period charm including high ceilings and bay windows
- * Quiet location close to shops, pubs, school, playing fields and only minutes to the CBD
- * This property has a proven track record as a first class rental with low vacancy and a good return
- * Genuine buyers can arrange inspection by private appointment
- * Floorplan and Memorandum of Information available on request.

Type : House
Price : \$ 720,000
Land Size : 449 sqm
View : <https://www.goulburnrealestate.com.au/sale/nsw/southern-tablelands/goulburn/residential/house/6186935>



Barry McEntee
02 4822 8711

[For full version visit the website](https://www.goulburnrealestate.com.au)



Whilst bwrn.com.au has made every attempt to ensure the accuracy of the floor plan contained here, measurements are approximate and no responsibility is taken for any error, omission, or mis-statement. This plan is for illustrative purposes only.

2,4 and 6 WILMOT ST

GOULBURN