



**9 Barry Crescent Goulburn NSW**

4  2  2 

\* Built by one of Goulburn's most respected local builders, this top quality 4 bedroom home is incredibly spacious with the oversized bedrooms a very popular feature compared to some of the current new builds

\* First class kitchen overlooks a large dining and family room which opens to the north facing alfresco area - a great example of modern, open plan living

\* There are 2 additional living spaces including a media room plus a rumpus room - both of these rooms have doors so you effectively have 3 separate living spaces, well designed to help with noise & climate control

\* As you would expect the main bedroom is equipped with an ensuite and walk-in robe

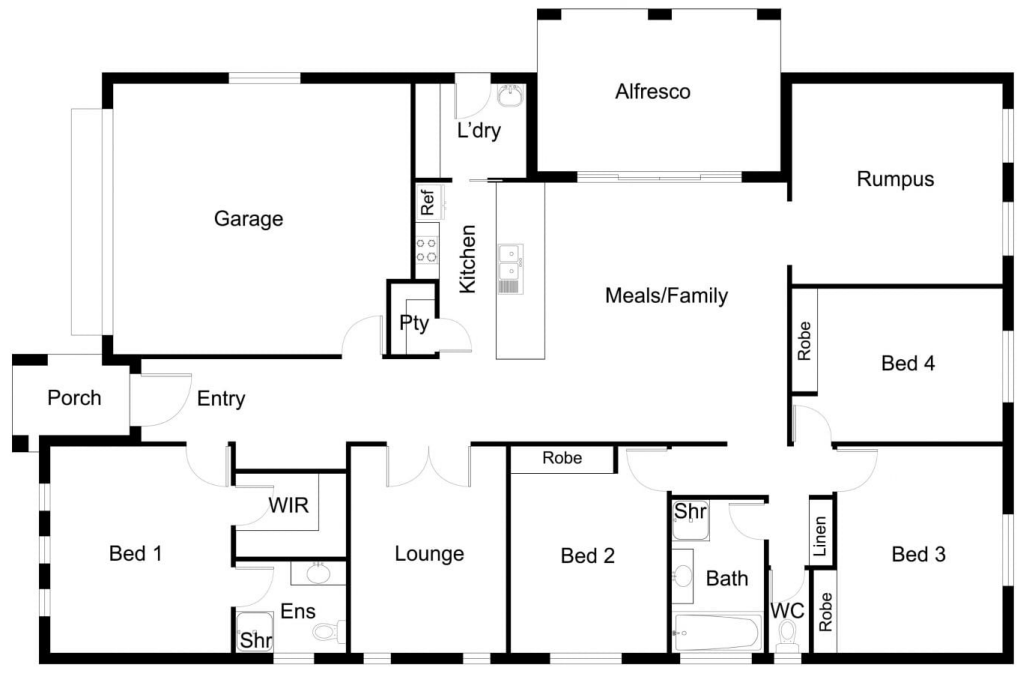
\* Double garage with auto entry & internal access to the home plus ducted reverse cycle air conditioning and solar

**Type** : House  
**Price** : \$ 644,000  
**Land Size** : 969 sqm  
**View** : <https://www.goulburnrealestate.com.au/sale/nsw/southern-tablelands/goulburn/residential/house/6091437>



**Barry McEntee**  
02 4822 8711

[For full version visit the website](https://www.goulburnrealestate.com.au)



FLOOR PLAN

This floor plan including furniture, fixture measurements and dimensions are approximate and for illustrative purposes only  
Boxbrownie.com gives no guarantee, warranty or representation as to the accuracy and layout.  
All enquiries must be directed to the agent, vendor or party representing this floor plan.

9 Barry Crescent, Goulburn